

Owner's Manual

READ THIS MANUAL CAREFULLY,
IT CONTAINS IMPORTANT SAFETY INFORMATION.

This operation manual is made for Go-kart models:

300XRX 300XR5 GK300-1 GK300-2 HAMERHEAD300



**Minimum
Recommended
Operator Age: 18**

BV Powersports, LLC – EMISSION CONTROL SYSTEM WARRANTY

YOUR WARRANTY RIGHTS AND OBLIGATIONS

The California Air Resources Board, the U.S. Environmental Protection Agency, and BV Powersports LLC (hereinafter “distributor”) are pleased to explain the emission control system warranty on your 2011 Off-Road ATV.

New off-road motor vehicles must be designed, built and equipped to meet U.S. EPA Federal and California anti-smog standards. Distributor must warrant the emission control system on your vehicle for 5,000 km, 500 hours of engine operation, or at least 30 months, whichever comes first, provided that there has been no abuse, neglect or improper maintenance of your vehicle. This ATV was designed to meet the emission standards for 10,000 km, 1,000 hours of engine operation, or five years, whichever comes first.

Your emission control system may include parts such as the carburetor or fuel injection system, the ignition system, catalytic converter and engine computer, if it is equipped. Also included may be hoses, belts, connectors and other emission-related assemblies.

This vehicle is warranted, for its emission control devices, for the full useful life of the vehicle. Where a warrantable condition exists, Distributor will repair your vehicle at no cost to you, including diagnosis, parts and labor.

If an emission-related part on your vehicle is defective, the part will be repaired or replaced by distributor. This is your emission control system DEFECTS WARRANTY.

OWNER’S WARRANTY RESPONSIBILITIES

As the vehicle owner, you are responsible for the performance of the required maintenance listed in your owner’s manual. Distributor recommends that you retain all receipts covering maintenance on your vehicle, but Distributor cannot deny warranty solely for the lack of receipts or for your failure to ensure the performance of all scheduled maintenance.

You are responsible for presenting your vehicle to the Distributor dealer as soon as a problem exists. The warranty repairs should be completed in a reasonable amount of time, not to exceed 30 days.

As the vehicle owner, you should be aware that Distributor may deny your warranty coverage if your vehicle or a part has failed due to abuse, neglect, improper maintenance or unapproved modifications.

If you use your vehicle in any type of competitive event, this warranty is immediately and completely void.

If you have any questions regarding your warranty rights and responsibilities, you should contact distributor at 2848 Reward, Dallas, TX 75220, the U.S. Environmental Protection Agency, 2000 Traverwood Avenue, Ann Arbor, MI 48105 or, (for California registered off-road vehicles only) the California Air Resources Board at 9528 Telstar Avenue, El Monte, CA 91731.

BV Powersports, LLC – EMISSION CONTROL SYSTEM WARRANTY

YOUR WARRANTY RIGHTS AND OBLIGATIONS

BV Powersports, LLC (hereinafter “Distributor”) warrants that each new 2011 and later Distributor off-road vehicle:

- A. is designed, built and equipped so as to conform at the time of initial retail purchase with all applicable regulations of the United States Environmental Protection Agency, and the California Air Resources Board; and
- B. is free from defects in material and workmanship which cause such vehicle to fail to conform to applicable regulations of the United States Environmental Protection Agency or the California Air Resources Board for the periods specified above.

The warranty period begins on the date the vehicle is delivered to the initial retail purchaser, or on the date the vehicle is first placed in service as a demonstrator, rental, lease prior to retail sale.

I. Coverage. Warranty defects shall be remedied during customary business hours at any authorized Distributor dealer located within the United States of America in compliance with the Clean Air Act and applicable regulations of the United States Environmental Protection Agency and the California Air Resources Board. Any part or parts replaced under this warranty shall become the property of Distributor.

II. Limitations This Emission Control System Warranty shall not cover any of the following:

- A. Repair or replacement as a result of
 - (1) accident,
 - (2) misuse,
 - (3) repairs improperly performed or replacements improperly installed,
 - (4) use of replacement parts or accessories not conforming to specifications set forth by Distributor, which adversely affect performance and/or
 - (5) use in competitive racing or related events.
- B. Inspections, replacement of parts and other services and adjustments required for required maintenance.
- C. Any vehicle equipped with an odometer or hour meter on which the odometer mileage or hour meter reading has been changed so that actual mileage cannot be readily determined.

III. Limited Liability

- A. The liability of Distributor under this Emission Control System Warranty is limited solely to the remedying of defects in material or workmanship by an authorized Distributor dealer at its place of business during customary business hours. This warranty does not cover inconvenience or loss of use of the vehicle or transportation of the vehicle to or from the Distributor or authorized dealer. Distributor shall not be liable for any other expenses, loss or damage, whether direct, incidental, consequential or exemplary arising in connection with the sale or use of or inability to use the distributor vehicle for any purpose. Some states do not allow the exclusion or limitation of any incidental or consequential damages, so the above limitations may not apply to you.

BV Powersports, LLC – EMISSION CONTROL SYSTEM WARRANTY

YOUR WARRANTY RIGHTS AND OBLIGATIONS

- B.** No express emission control system warranty is given by Distributor, except as specifically set forth herein. Any emission control system warranty implied by law, including any warranty of merchantability or fitness for a particular purpose, is limited to the express emission control system warranty terms stated in this warranty. The foregoing statements of warranty are exclusive and in lieu of all other remedies. Some states do not allow limitations on how long an implied warranty lasts, so the above limitations may not apply to you.

IV. LEGAL RIGHTS. This warranty gives you specific legal rights, and you may also have other rights which vary from state to state.

V. ADDITIONAL INFORMATION. Any replacement part that is equivalent in performance and durability may be used in the performance of any maintenance or repairs. However, distributor is not liable for these parts. The owner is responsible for the performance of all required maintenance. Such maintenance may be performed at a service establishment or by any individual.

This warranty is in addition to the Distributor limited vehicle warranty.

No dealer is authorized to modify this Limited Emission Control System Warranty issued by Distributor.

OWNER’S MANUAL

Page

1. FOREWORD1

2. A FEW WORDS ABOUT SAFETY.....2

3. IMPORTANT SAFETY INFORMATION.....3

4. SAFETY LABELS5

5. ARE YOU READY TO DRIVE?6

6. IS YOUR VEHICLE READY TO DRIVE?7

7. SAFE DRIVING PRECAUTIONS8

8. P.D.I.....10

9. SPECIFICATIONS.....11

10. OPERATION.....13

11. SERVICE INSTRUCTIONS.....17

12. REPAIR.....20

13. PERIODICAL CHECK AND SERVICES.....23

14. WIRING DIAGRAM.....24

Thank you for purchasing our Kart. We hope you will enjoy it. Before you start to operate the kart, please read through this Owner's Manual carefully as it contains important safety and maintenance information. Failure to follow the warnings contained in this manual can result in serious injuries. Or death

Be sure to follow the recommended maintenance schedule and service your kart accordingly. Preventive maintenance is extremely important to the longevity of your kart.

Beginners should seek instruction from their dealer or qualified instructors before and during initial use of the kart. It is also recommended to practice in a large flat open area to familiarise yourself with operations of this kart.

We hope you will have a pleasant experience with our products and thank you again for choosing our kart.

A FEW WORDS ABOUT SAFETY


In order to keep everyone safe, you must take responsibility for the safe operation of your kart.

To help you make informed decisions about safety, we have provided operating procedures and other information on labels and in this manual. This information alerts you to potential hazards that could hurt you or others.

It is not practical or possible to warn you about all hazards associated with operating or maintaining a kart. You must use your own good judgment.

You will find important safety information in a variety of forms, including:

Safety Labels - On the kart.

Safety Messages - preceded by a safety alert symbol  and one of two signal words: **WARNING**, or **CAUTION**.

These signal words mean:



Physical harm may result from failure to adhere to the instructions that are described within the WARNING labels.

Safety Headings - such as Important Safety Reminders or Important Safety Precautions.

Safety Section - such as Kart Safety.

Instructions - how to use this kart correctly and safely.

This entire manual is filled with important safety information-please read it all carefully.

Your kart will provide you with many years of use and pleasure. Providing you take responsibility for your own safety and that of any one else using your kart or near to the kart when it is being used and understand the challenges you can meet while driving.

There is much that you can do to protect yourself while operating your kart. You will find many helpful recommendations throughout this manual. The following are a few that we consider to be the most important.

Follow the Age Recommendation

The kart should not be driven by anyone under the age of 16.

Always Wear a Helmet

It's a proven fact: helmets significantly reduce the number and severity of head injuries. Always wear an approved motorcycle helmet. We also recommend that you wear eye protection, sturdy boots, gloves, and other protective gear.

Drive Off-Road Only

Your kart is designed and manufactured for off-road use only. The tires are not made for use on pavements, and the kart does not have turn signals and other features required for use on public roads. If you need to cross a paved or public road, get off and walk your kart across.

Take Time to Learn & Practice

Even if you have driven other karts, take time to become familiar with how this kart works and handles. Practice in a safe area until you build your skills and get accustomed to this kart's size and weight.

Because many accidents involve inexperienced or untrained drivers, we urge all drivers to take a training course. Check with your dealer for more information on training courses.

Be Alert for Off-Road Hazards

The terrain can present a variety of challenges when you drive off-road. Continually "read" the terrain for unexpected turns, drop-offs, rocks, ruts, and other hazards. Always keep your speed low enough to allow time to see and react to hazards.

IMPORTANT SAFETY INFORMATION

Drive within Your Limits

Pushing limits is another major cause of kart accidents. Never drive beyond your personal abilities or faster than conditions warrant. Remember that alcohol, drugs, fatigue, and inattention can significantly reduce your ability to make good judgments and drive safely.

Don't Drink and drive

Alcohol and driving don't mix. Even one drink can reduce your ability to respond to changing conditions, and your reaction time gets worse with every additional drink. So don't drink and drive, and don't let your friends drink and drive either.

Do not operate this kart at night.

Operating in the dark vision can greatly reduce a driver's visibility and judgment. So driving at night is dangerous and can increase the possibility for an accident.

Never run your kart indoors.

The exhaust from the engine contains a tasteless, odorless and poisonous gas called carbon monoxide.

Keep away from moving parts of the kart

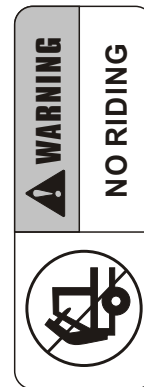
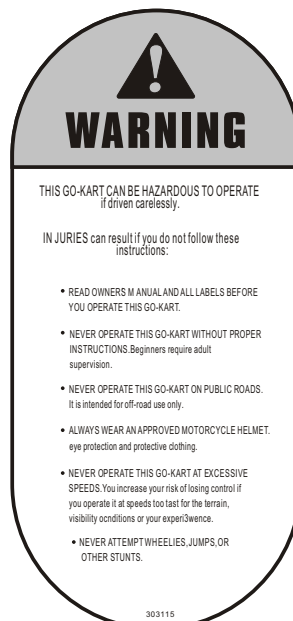
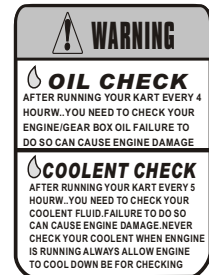
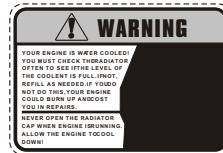
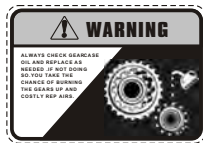
The operator of the kart should never place their hands or other parts of their body near any moving part of the kart. Failure to adhere to this warning will cause physical harm to your body.

Skidding or Sliding

The terrain surface can be a major factor affecting turns. Skidding in a turn is more likely to occur on slippery surfaces such as snow, ice, mud and loose gravel. If you skid on ice, you may lose all directional control. To avoid skidding on slippery terrain, keep your speed low and drive carefully.

This section presents some of the most important information and recommendations to help you drive your kart safely. Please take a few moments to read these pages.

The labels should be considered permanent parts of the kart. If a label comes off or becomes hard to read, contact your dealer for a replacement.



ARE YOU READY TO DRIVE?

Before each drive, you need to make sure that you and your kart are both ready to drive. To help get you prepared, this section discusses how to evaluate your driving readiness, what items you should check on your kart, and adjustments to make for your comfort, convenience, of safety.

Before you drive your kart for the first time, we urge you to:

- Read this owner's manual and the labels on your kart carefully.
- Make sure you understand all the safety messages.
- Know how to operate all the controls.

Before each drive, be sure:

- You wear your seat belt at all times while driving your kart.
- You feel well and are in good physical and mental condition.
- You are wearing an approved motorcycle helmet (with chin strap tightened securely), eye protection, and other protective clothing.
- You don't have any alcohol or drugs in your system.

Protective Apparel

For your safety, we strongly recommend that you always wear an D.O.T. Approved motorcycle helmet, eye protection, boots, gloves, long pants, and long-sleeved shirt or jacket whenever you drive.

Although complete protection is not possible, wearing proper gear can reduce the chance of injury should you have an accident.

The following suggestions will help you choose the proper protective gear.

Helmets and Eyes Protection

Your helmet is your most important piece of protective gear because it offers the best protection against head injuries. A helmet should fit your head comfortably and securely.

An open-face helmet offers some protection, but a full-face helmet offers more. Regardless of the style, look for a D.O.T. (Department of Transportation) sticker on any helmet you buy. Always wear a face shield or goggles to protect your eyes and help your vision.



WARNING

Operating this kart without wearing an approved motorcycle helmet, eye protection, and protective clothing could increase your chances of head and/or eye injury, and the possibility of death in the event of a severe accident. Always wear an approved motorcycle helmet that fits properly and wear eye protection (goggles or face shield), gloves, boots, long-sleeved shirt or jacket and long pants.

ARE YOU READY TO DRIVE?

Additional Driving Gear

In addition to a helmet and eye protection, we also recommend:

- Sturdy off-road motorcycle boots to help protect your feet, ankles, and lower legs.
- Off-road motorcycle gloves to help protect your hands.
- Driving pants with knee and hip pads, a driving jersey with padded elbows, and a chest/shoulder protector.

Driver Training

Developing your driving skills is an on-going process. Even if you have driven other karts, before take time to become familiar with how this kart works and handles. Practice driving the kart in a safe area to develop your skills. Do not drive on rough terrain until you get accustomed to the kart's controls, and feel comfortable with its size and weight.



WARNING

Operating this kart without your seat belt could cause you to be thrown from the kart, causing serious injury or death.

No Alcohol or Drugs

Alcohol, drugs and karts don't mix. Even a small amount of alcohol can impair your ability to operate a kart safely. Likewise, drugs-even if prescribed by a physician-can be dangerous while operating a kart. Consult your doctor to be sure it is safe to operate a vehicle after taking medication.



WARNING

Operating this kart after consuming alcohol or drugs can seriously affect your judgment, cause you to react more slowly, affect your balance and perception, and could result in serious injury or death.

Never consume alcohol or drugs before or while operating this kart.

IS YOUR VEHICLE READY TO DRIVE?

Before each drive, it is important to inspect your kart and make sure any problems you find are corrected. A pre-drive inspection is a must, not only for safety, but because having a break down, or even a flat tire, can be a major inconvenience.

If your kart has overturned or has been involved in a collision, do not drive it until your kart has been inspected by your dealer. There may be damage or other problems that you can not see.



WARNING

Improperly maintaining this kart or failing to correct a problem before driving can cause a crash in which you can be seriously hurt or killed.

Always perform a pre-drive inspection before every drive and correct any problems.

Pre-Drive Inspection

Always carry out the Pre-Drive Inspection detailed on Page 16 before getting in your kart.

SAFE DRIVING PRECAUTIONS

Off-Road Use Only

Your kart and its tires are designed and manufactured for off-road use only, not for use on paved surfaces. Driving on paved surfaces can affect the kart handling and control. You should not drive



WARNING

Operating this kart on paved surfaces may seriously affect handling and control of the kart, and may cause the vehicle to go out of control.

Never operate the kart on any paved surfaces, including pavements, driveways, car parks and streets.

When driving off-road, also remember to always obey local off-road driving laws and regulations. Obtain permission to drive on private property. Avoid posted areas and obey “no trespassing” signs.

You should never drive your kart on public streets, roads or highways, even if they are not paved. Drivers of street vehicles may have difficulty seeing and avoiding you, which could lead to a collision. In many states it is illegal to operate karts on public streets, roads and highways.



WARNING

Operating this kart on public streets, roads or highways could cause a collision with another vehicle.

Never operate this kart on any public streets, roads or highways, whether they are dirt, gravel or paved surfaces.

Keep Hands and Feet on Controls

When driving your kart, always keep both hands on the steering wheel and both feet on the foot controls. It is important to maintain your balance and to control the kart. Removing hands or feet away from the controls can reduce your ability to react and control the kart.



WARNING

Removing your hands from the steering wheel or feet from the foot controls during operation can reduce your ability to control the kart or could cause you to lose your balance and fall off the kart.

Always keep both hands on the steering wheel and both feet on the foot controls of your kart during operation.

Control Speed

Driving at excessive speed increases the chances of an accident. In choosing an appropriate speed, you need to consider the capability of your kart, the terrain, visibility and other operating conditions, plus your own skill and experience.



WARNING

Operating this kart at excessive speeds increases your chances of losing control of the kart, which can result in an accident.

Always drive at a speed that is appropriate for your kart, the terrain, visibility and other operating conditions, and your experience.

Use Kart on Unfamiliar or Rough Terrain

Before driving in a new area, always check the terrain thoroughly, Don't drive fast on unfamiliar terrain or when visibility is limited (it's sometimes difficult to see obstructions like hidden rocks, bumps, or holes in time to react).



WARNING

Failure to use extra care when operating this kart on unfamiliar terrain could result in the kart overturning or going out of control.

Go slowly and be extra careful when operating on unfamiliar terrain. Always be alert to changing terrain conditions when operating the kart.

Never drive past the limit of visibility. Maintain a safe distance between your kart and other off-road vehicles. Always exercise caution and use extra care on rough, slippery and loose terrain.



WARNING

Failure to use extra care when operating on excessively rough, slippery or loose terrain could cause loss of traction or vehicle control, which could result in an accident, including an overturn.

Do not operate on excessively rough, slippery or loose terrain until you have learned and practiced the skills necessary to control the kart on such terrain.

Always be especially cautious on these kinds of terrain.

Do Not Perform Stunts

You should always operate your kart in a safe and reasonable manner. When driving, always keep all four wheels on the ground.



WARNING

Attempting wheelies, jumps, and other stunts increases the chance of an accident, including an overturn.

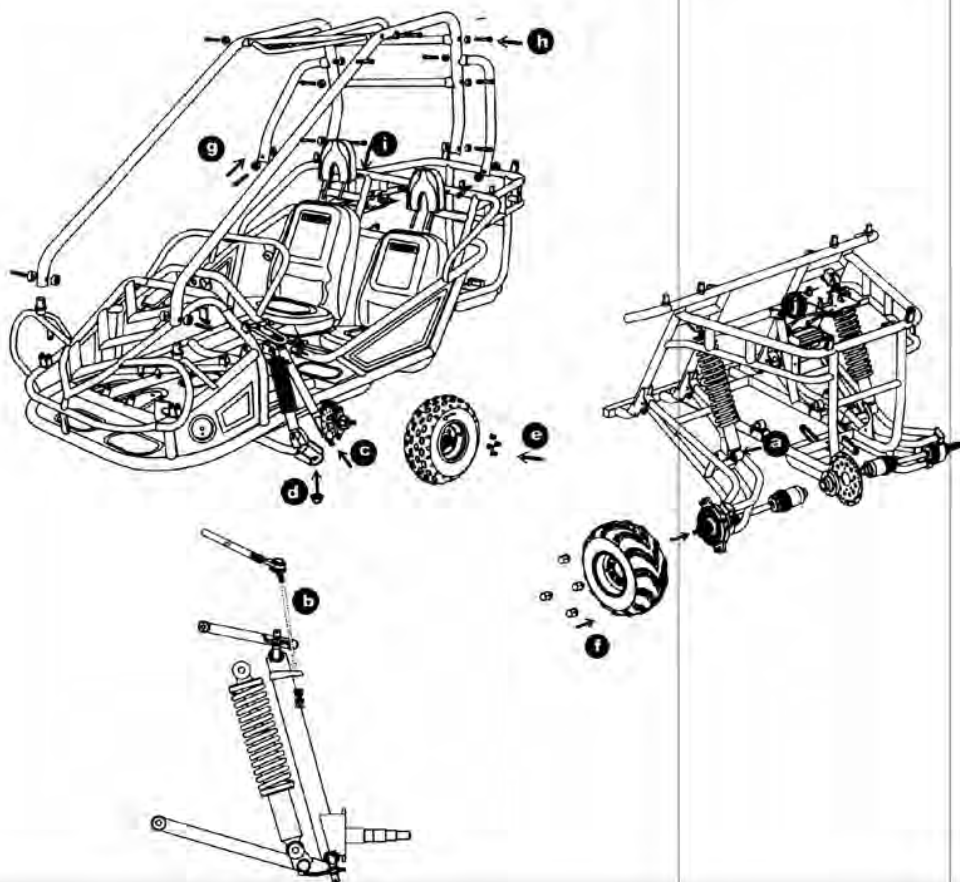
Never attempt stunts, such as wheelies or jumps. Don't try to show off.

Radiator Indicator Lamp

During the driving, you should always keep close contact with this red indicator lamp. This indicator lamp will tell you when your engine coolant system is getting too hot. To keep from causing any damage, you should stop the kart and turn the key off. Check if there is any leak, At this time do not open the radiator cap, allow your coolant system and engine to cool down before opening the radiator cap.

If you find the coolant completely gone, you should check if the radiator, hoses or engine has such leaks

- A. Install RR. Shocks and tighten the unts.
- B. Install Ball Head, Tie Rod, tighten the Castle Nut and insert the cotter Pin.
- C. Install Dust Seals, align the Ball Head Bolt, Knuckle Support to the square hole on the Lower A-Arm.
- D. Install Flange Nut and tighten it (>88.9 foot lbs)
- E. Install Front Tires and tighten the nuts.
- F. Install Rear Tires, tighten the nuts, insert cotter Pin and put on the Rubber Cover.
- G. Raise the C.B.C bar as the picture shows.
- H. Install C.B.C bar RR., put on R-Washer.
- I. Install Head-Rest.
- J. Check all nuts and bolts, wiring, cables, fuel line, switches and tire pressure.
- K. Fill battery with Acid and charge, check and fill the engine with the recommended oil.
- L. Fill fuel tank with Unleaded Gasoline, and turn on the ignition switch to start the engine.



DIMENSIONS

Overall Length	87 in.(2210mm)
Overall Width	53.5 in.(1346mm)
Overall Height	56.6 in.(1438mm)
Wheelbase	66.1 in.(1680mm)
Front Track	45.7in.(1160mm)
Rear Track	42.7 in.(1085mm)
Ground Clearance	8.5 in.(215mm)

ENGINE

Type	Water-cooled.4-Stroke
Engine capacity	300cc
Bore / Stroke	72.5mm x 66.8mm
Displacement	275.6cm
Corrected compression ratio	10:1
Carburetor	VEKS4 & CV30
Output Power	13KW/ 6500RPM
Maximum Torque	22N.m/5000RPM
Starting	Electri
Ignition	C.D.I
Lubrication	Force&Splash
Transmission	Automatic(C.V.T system)
Spark Plug	DR8EA(NGK)
Plug gap	0.6-0.7mm
Fuel Type	Rq90(unleaded)
Lubricate oil	SAE 15W -40/SF

DRIVE COMPONENTS

Gear box oil	MoS2 & W -2DW-4D
--------------	------------------

CAPACITIES

Maximum load	Do Uble Seats/400lbs
Fuel tank	25 Gal
Engine oil	30 Oz
Starting	5s
Climbing	20°-25°
Battery	12V 10Ah
Head Light	12V 35W /35W
Tail Light	12V 21W /5W
Fuse	10A

Brake Track.....<7m@20miles/h
Top speed.....75miles/h(or limited as customers require)

CHASSIS

Front,Rear brake... .. Hydraulic disc,left foot control
Front tire20 x 7-8
Rear tire22 x 10-10
Front SuspensionIndependent Dual A-Arm
Rear Suspension..... Full Independet Rear Suspension/ Oil Damped Shock
Restraint System Dual 4-point Harness
Final Drive CV- Shafts

TIRE PRESSURE

Front.....7-9psi
Rear.....8-9psi

WEIGHT

Net Weight.....280Kg
Gross Weight 320Kg

A. Operation controls

WARNING - Do not attempt to start or operate the engine until completely familiar with the location and use of each control necessary to operate this vehicle. The operator must know how to stop this machine before starting and driving it.

a. Throttle

The right foot pedal is the throttle that controls the kart speed. As the engine speed increases above idle, the clutch automatically engages and moves the vehicle forward.

(See Fig. 1)



WARNING

Each time prior to starting the engine, check the throttle assembly to ensure that when the pedal is pushed all the way forward the assembly is working smoothly and returns to idle when released. Do not operate if pedal or engine throttle linkage fail to return to idle. If unable to correct the problem through lubrication, adjustment or replacement of worn parts, contact your dealer for assistance.

b. Brake

The brake is the left foot pedal (See Fig.1). Applying pressure to the pedal slows or stops the kart.

c. Start engine

Insert the key into key-switch, turn the key clockwise, release the key when the engine starts. The engine will warm up within 5 minutes and the choke will close automatically allowing operation at normal RPM (Warning: Don't crank the starter for more than 5 seconds at one time).

d. Engine stop button

Important-stop button test.

Before driving this vehicle, test the Engine Stop Button to ensure that it is operating properly. With the engine running, push and hold the Engine Stop Button for two seconds for the engine to shut down.

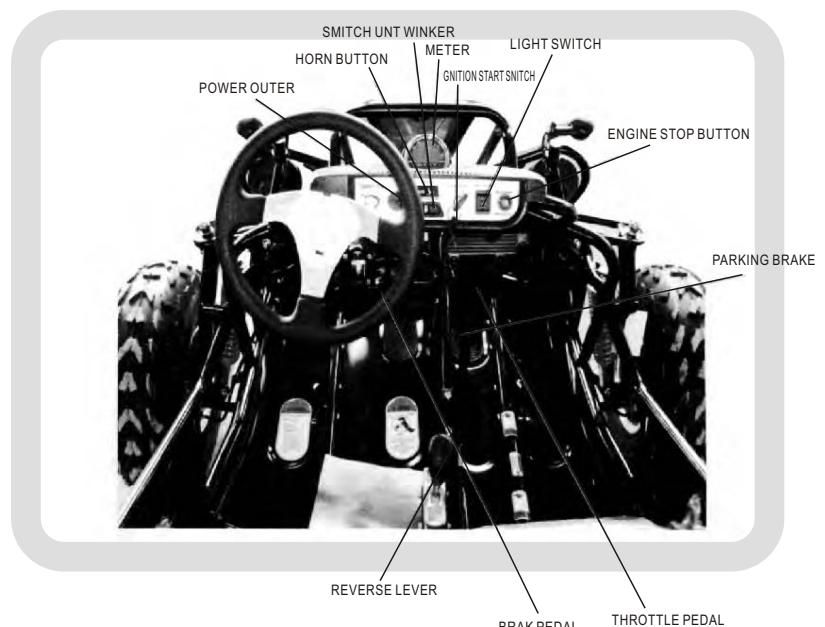


Figure 1

B. Pre-Drive Inspection



WARNING

Perform this pre-drive inspection everyday before driving the vehicle. If not performed, serious damage to the vehicle or personal injury may result.

- a. Check the engine oil level is between the bottom of the dipstick and the “0” mark, Check for leaks. Add oil if required.
- b. Check the Fuel Level. Add fuel as necessary and do not overfill. Check for leaks. Ensure the fuel filler cap is securely fastened.
- c. Check the Brakes. Depress the left brake pedal several times, and check for adequate brake pedal free play. Make sure there is no brake fluid leakage.
- d. Check the tires. Check their condition for damage or excessive wear and pressure.
- e. Check the Throttle Chain. Check for smooth operation. Ensure the throttle snaps back to idle when released and moves smoothly without sticking.
- f. Check the Engine Stop Button. While the engine is running press and hold the engine stop button for 2 seconds. Make sure the engine stops.
- g. Check all Nuts, Bolts, and Fasteners. Check the wheels to see that all axle nuts and lug nuts are tightened properly. Check and tighten as necessary all other nuts, bolts and fasteners.
- i. Check the C.B.C.Bar. Ensure all C.B.C bars are in place before operating the kart.
Check the Lights. Check the headlights, brake light and tail light are all working.
- i. Check the Steering. Check that the steering wheel moves freely in both directions but
- j. without any unusual looseness.
- k. Check all Cable Housings. Check these for wear and the fitting for any looseness.
Check the underbody and exhaust system. Remove all dirt, vegetation and mud and check
- l. for any damage due to impact with rocks or uneven terrain.
- m. Check the Air Cleaner Housing Drain Tube. Check the deposits in the drain tube. If necessary, check the tube and air cleaner housing.
- n. Check Leaks and Loose Parts. Walk around your kart and look for anything that appears unusual, such as a leak or loose cable.
- o. Check the Parking Brake. Make sure the kart does not move forward or backward when the parking brake is applied.
- p. Check the Radiator. Make sure there is no leak of radiator or hoses before you start the engine. Check the water level.
- q. Check the radiator to see if the level of the coolant is full. Refill the coolant as needed or your engine would burn up and cost you in repairs. Never open the radiator cap when engine is running. Allow the engine to cool down, and then refill the coolant.

Component locations

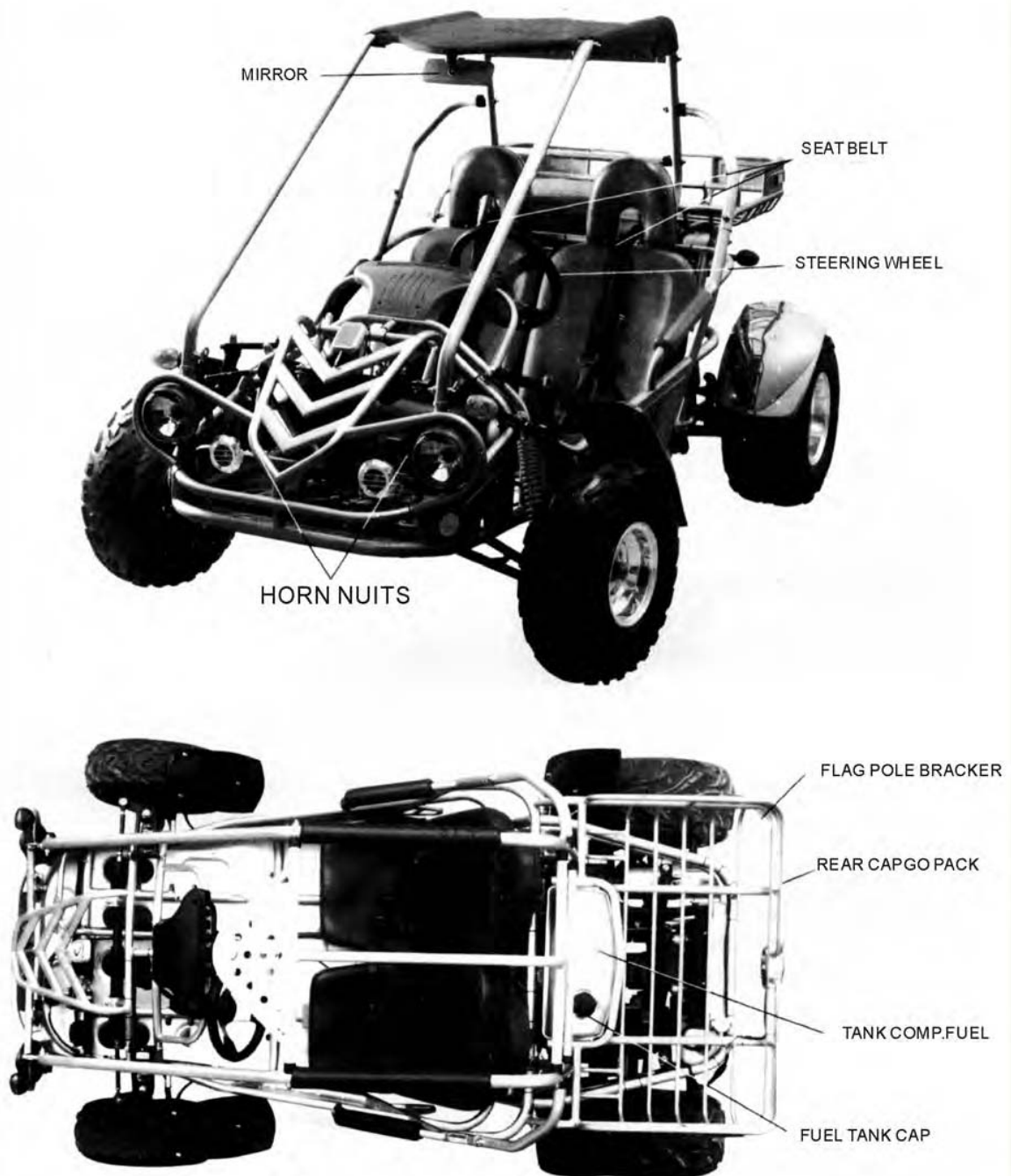


Figure 2

C.Passengers

The vehicle is designed for two people only. The combined maximum weight of the driver and the passenger should not exceed 200kg or 440lbs.

D.Seat Adjustment

The seat should be securely fastened in the position which gives the operator best control of the foot pedals, steering wheel, and the remote stop button.

- Pull the seat adjustment handle upward to disengage the seat slide.
- Move the seat to the desired position.
- Be sure that the seat adjustment handle snaps back into place and that seat is locked into position.



Figure 3



WARNING

Before attempting to adjust the seat, ensure that engine is stopped



WARNING

Never operate this kart when the seat is not securely in place, to do so could result in personal injury or loss of life.

E.Forward and Reverse Gear

- Push the brake pedal down. The brake pedal must be pushed in to change the gear settings.
- Push the lever forward to the “D” position for the kart to move forward.
- Each time you need to apply the brake to change the setting to go backwards apply the brake and move the lever to the “R” for the kart to go backwards note! Your kart is set up with 3 settings(See Fig.4)

“D” Forward
“N” Neutral
“R” Reverse



WARNING

Always stop the kart before changing gears. Your kart's shifter will only change after the kart is stopped and not moving!

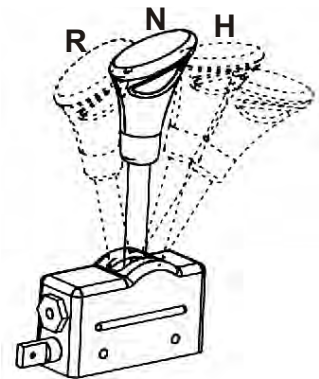


Figure 4

F.Starting and Operating Instructions

- a. Before starting the engine, the driver must be seated properly in the kart with the seat belt on.
- b. Practice in the kart in an open space at the beginning to learn how to start, turn and stop the vehicle.
- c. Drive slowly until you are familiar with the operation of the kart.
- d. The turning radius of this kart is small and agile, so the centrifugal force is very high when turning at high speed. Slow down to a more controllable speed when turning to prevent the kart from rolling over. The driver should keep their heels on the ramp of the main board when turning.
(See Fig.5) Keep their leg on the foot pedal, the driver can feel that the kart is stable and won't roll over.



POSITION FOR HEEL

Figure 5

SERVICE INSTRUCTIONS

A.Air Cleaner

Service the air cleaner every 20 hours

NOTE: Service is required more often in dusty conditions.

- a. Remove cleaner cover 1.
- B. Remove air cleaner element 2 (See Fig.6)
- c. Fill the non-flammable cleaning agent into a basin and dip the element in it.
- d. Dry it after cleaning. Replace check for cracks or holes. It needs to be replaced with new filter.

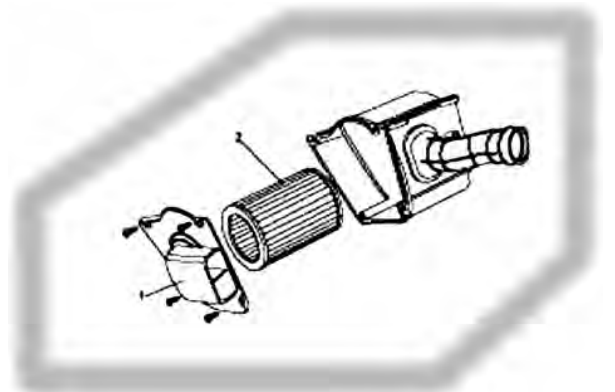


Figure 6

B. Engine Lubrication

You must change the oil in the crankcase after the first 5 hours of operating (See Fig.7) and after every 10 hours of use thereafter. This will insure proper lubrication of the internal parts and prevent costly repairs due to excessive wear.



WARNING

Used Oil Must Be disposed of at a proper collection Center

a. Remove the drain plug located on the right rear side of the engine. Tip the kart backwards slightly by blocking up the front end and drain the oil into suitable container.

b. Remove and clean the oil filter.

c. Replace the drain plug and tighten securely. Place the kart in a level position.

d. Refill the crankcase (approximately 1 1/4 pint) to the top of the filler neck with SAE 10W40 oil.

e. Check the oil level before each use of the kart or after each 10 hours of operation. Add oil when necessary to keep the level between the bottom of the dipstick and the "0" mark. Do not mix various grades of oil.

ENGINE OIL PLUG COVER

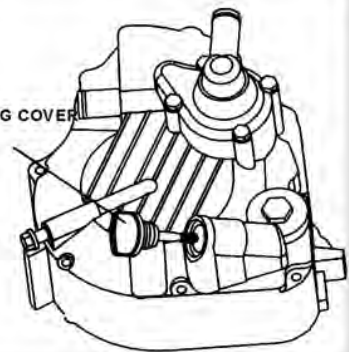


Figure 7

C. Spark Plug

A. Remove the spark plug and inspect it each time you change the oil (Use a spark plug wrench). The electrodes should be kept clean and free of carbon. The presence of carbon or excess oil will greatly reduce engine performance. If possible, check the spark plug gap (area between electrodes) using a wire feeler gauge. This specification is 0.6-0.7 mm.

b. Before installing the spark plug coat the threads lightly with graphite grease if possible, to ensure easy removal next time the spark plug needs inspection.

c. It is advisable to replace the spark plug at least once a year to ensure easy starting and good engine performance.

SEAM, DIRT, CARBON VERIFY

0.6-0.7mm

WASHER VERIFY

SEAM VERIFY

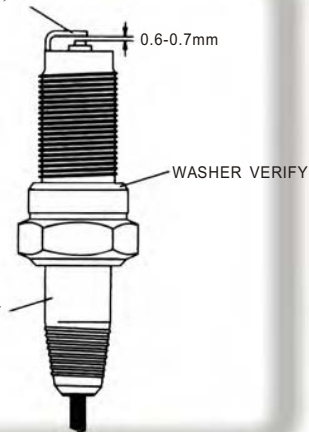


Figure 8

D. Cleaning Adjustment

Never make unnecessary adjustments. The factory recommended settings are correct for most applications.

- a. Warm up the engine (5-10min)
- b. Tighten the air screw gently. Backout 2-3/8 turns counter clockwise.
- c. Connect the tachometer, adjust the throttle to limit the idle speed. The standard value is 1400RPM
- d. Turn the air screw counter clockwise slowly and observe the RPM of the engine, stop adjusting as the RPM reaches the top speed
- e. Adjust the screw and adjust the idle speed to an ideal value.
- f. Recheck and readjust the idle speed if necessary.

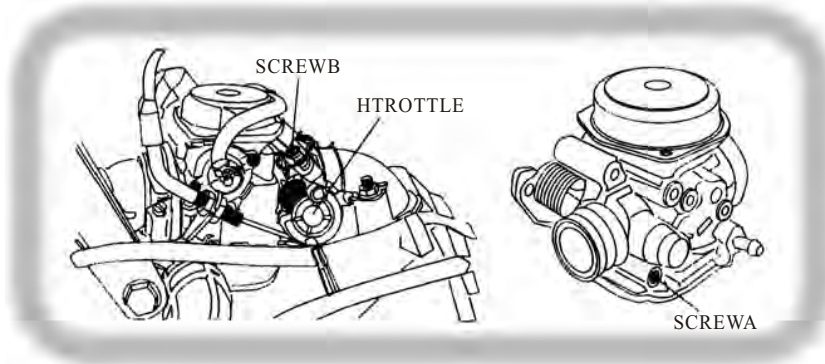


Figure 9

E. Cleaning Instructions

Keep your kart clean. With a clean rag, wipe off all dirt and oil from around the controls. Wipe off any spilled fuel and oil. Keep the engine clean of foreign objects, and be sure to check that the air intake fan is free of debris for proper cooling.

F. Kart Lubrication

Lubricate the vehicle every 90 days of use. Lubrication should be done more often, if the kart is used everyday.

G. Adjustment of Front And Rear Shock

There are five positions on each shock. The default position is the middle set by the manufacturer (see Fig. 10)

Use a round nut wrench as you adjust the shock, the tension of the shock spring will increase as you screw to the left, decrease as you screw to the right. Adjust according to the weight of the riders.

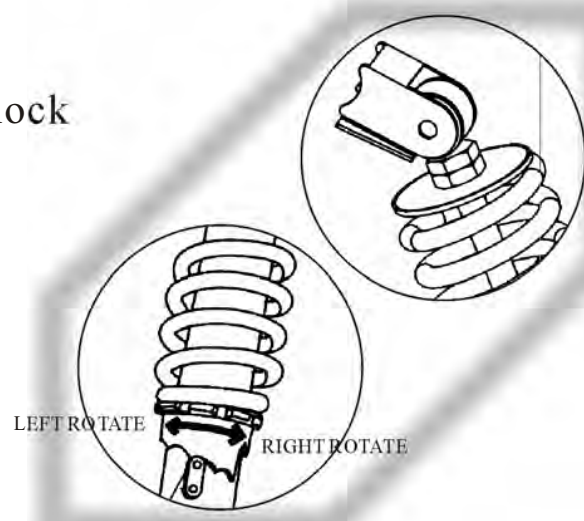


Figure 10

H.Storage Instruction

In the event your kart is not to be operated for a period in excess of 30 days or at the end of each driving season prepare for storage as follows:

- a.Drain the fuel tank and carburetor by allowing the engine to run out of fuel.
- b.Lubricate engine cylinder by removing the air spark plug and pouring a small amount of oil into the plug hole,then re-fit the plug.
- c.Do not save or store gasoline over winter.Using old gasoline,which has deteriorated from storage,will make the engine difficult to start and affect engine performance.



WARNING

Do not drain fuel while engine is hot.Be sure to move the kart outside before draining fuel.

REPAIR

A.Front Wheel Replacement

Do not disassemble the castle nuts when you replace the front wheels.

It is only necessary to remove the 4 lug nuts to remove the wheel.(See Fig.11)

Tighten the nuts after replacing the wheels.

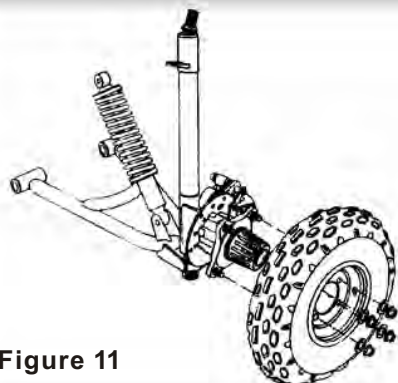


Figure 11

B. Rear Wheel Replacement

Do not disassemble the castle nuts when you replace the rear wheels and hub assembly.

Remove the cotter pin and then 24 mm nut. Then slide off the wheel and hub assembly. It is only necessary to remove the 4 lug nuts to remove the wheel. Tighten the nuts after replacing the wheels.

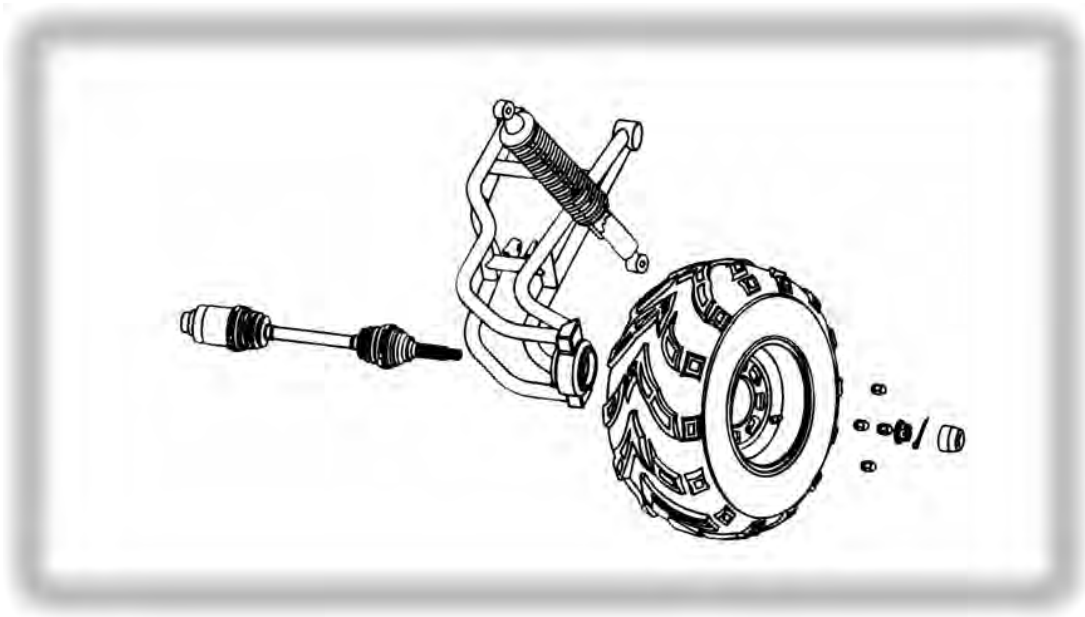


Figure 12

C. Front Wheel Alignment

a. The front wheels should be toe-in from 1/8 to 1/4 inch. To check for alignment, measure distance A and B between the centerline (CL) of the wheels. The proper toe-in dimension A should be 1/8 to 1/4 inch greater than dimension B.

b. To adjust the alignments, loosen the lock nuts on both sides of Front Tie Rods. To make Dimension B smaller, turn the rod to left. Adjust the rod to right direction to make Dimension B larger. After adjusting to the desired length, tighten the lock nut against the rod end. Recheck the dimensions for proper alignment.

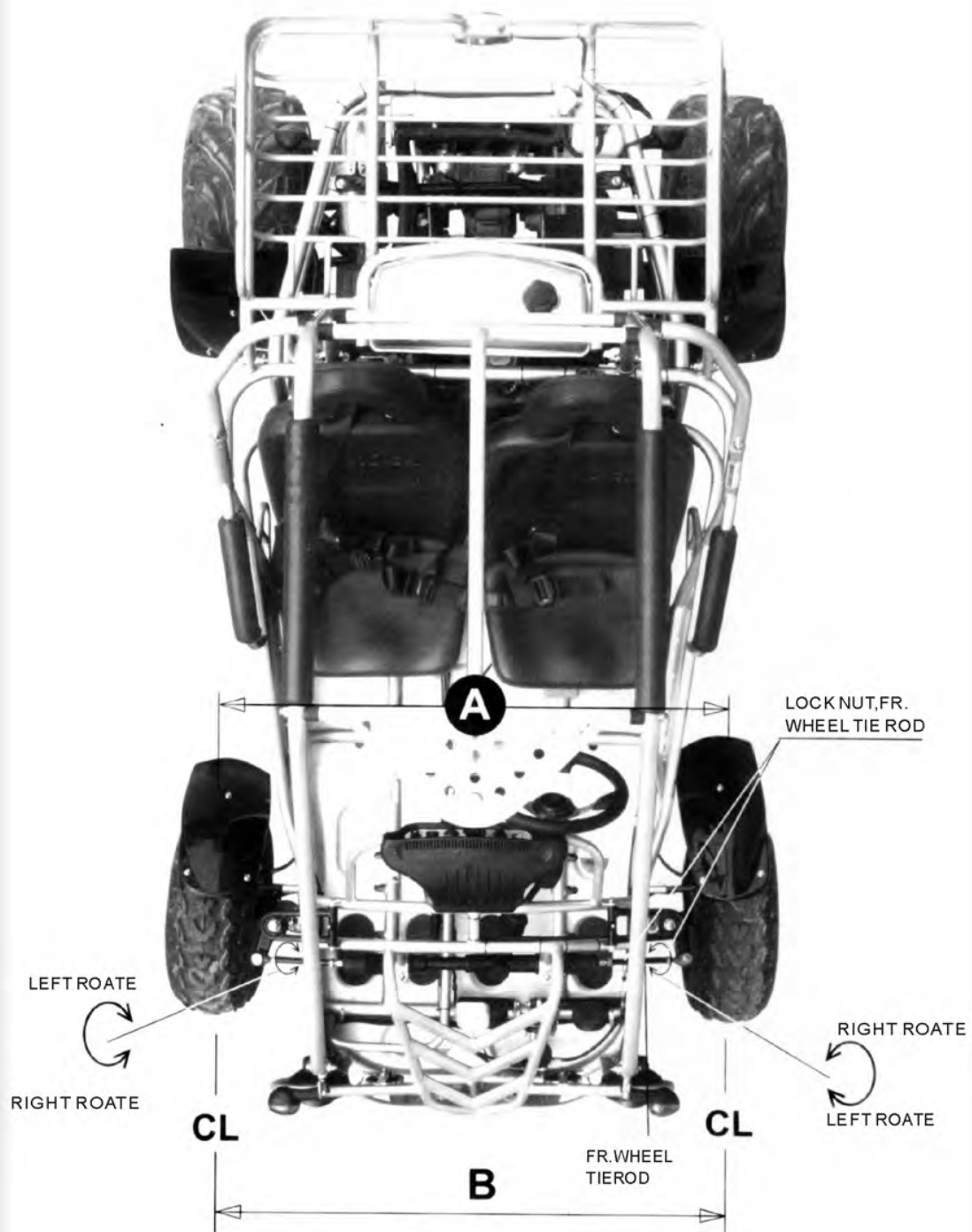


Figure 13

PERIODICAL CHECK AND SERVICES

To keep the performance good, the motorcycle should be checked and maintained at certain interval. The meanings of capital in following table are:

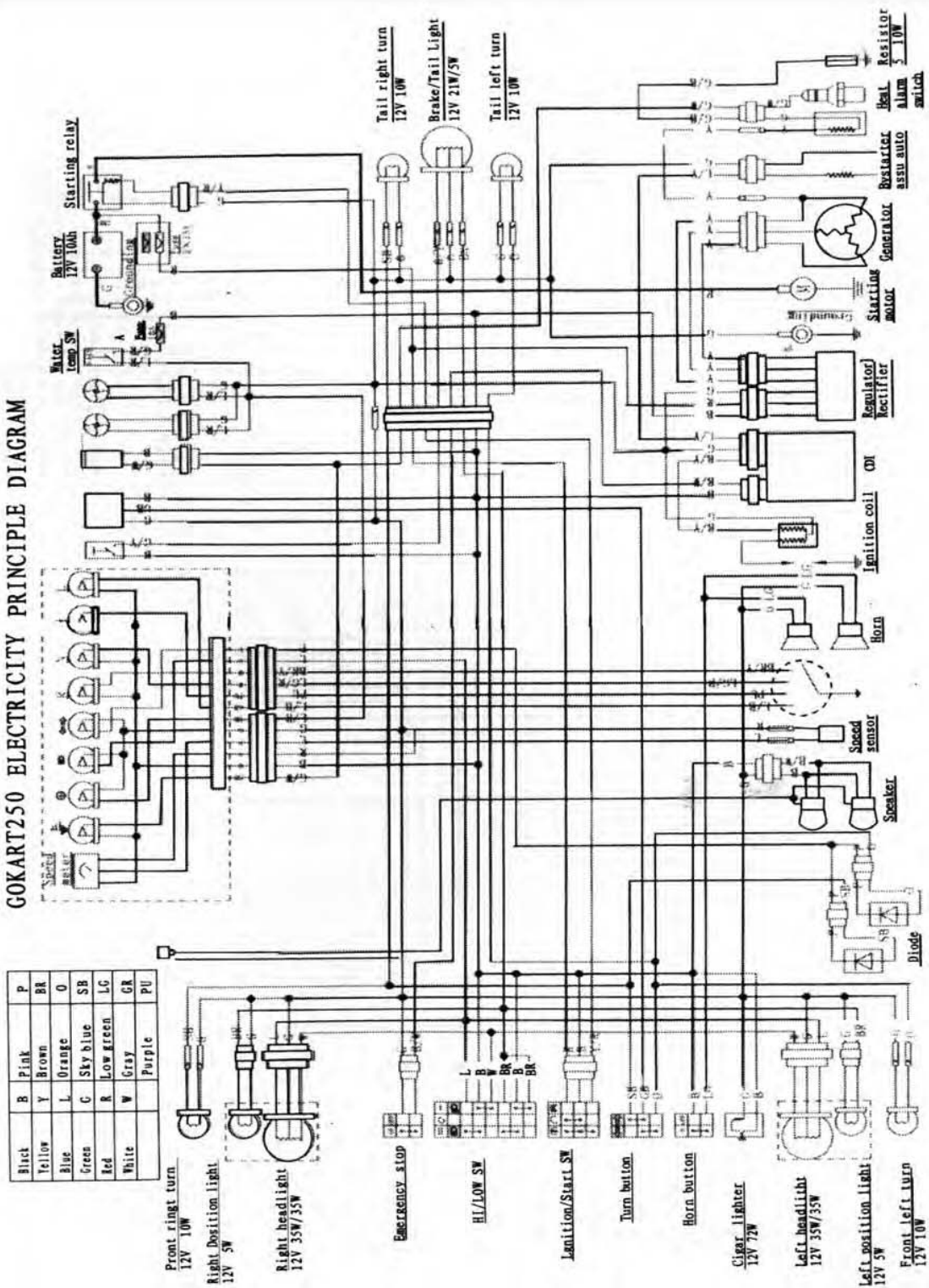
I: Inspection, including check, clean, lubricate, refuel, repair or replacing if necessary.

A: Adjusting C: Cleaning R: Replacing T: Tightening

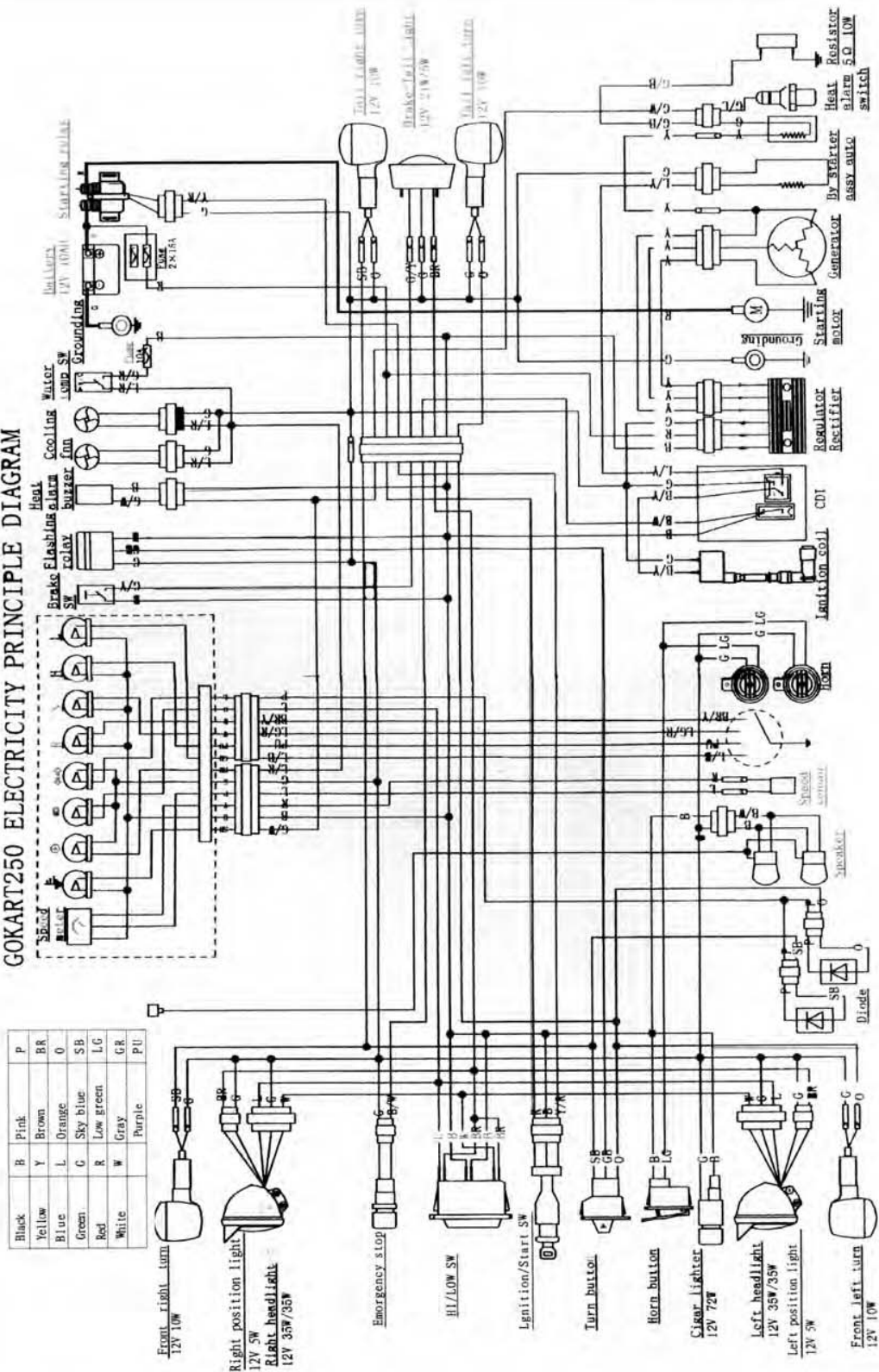
Maintenance period Items		Odometer (km)													
		300	1000	2000	3000	4000	5000	6000	7000	8000	9000	10000	11000	12000	Everyday check before riding
Crankcase lube		R	R		R		R		R				R		I
Lube filter		C				C				C				C	
Air filter		Clean filter every 2000~3000 km. change it when necessary													
Spark plug		Initial 1000km and Clean every 3000~4000km change it when necessary													
Valve gap			A			A				A				A	
Cam chain			A			A				A				A	
Carburetor		I				I,C				I,C				I,C	
Gas filter										R					
Brake system			I	I	I	I	I	I	I	I	I	I	I	I	I
Driving chain			I							I					I
Fasteners		T					T					T			
Coolant		A			A			A				A		A	I
Gearbox oil		I			R			R						R	
Battery													I		
* When the mileage is over the highest on the table, please perform according to the period set on the table															
* Driving on dust place, it is recommended to clean it frequently.															

WIRING DIAGRAM

GOKART250 ELECTRICITY PRINCIPLE DIAGRAM



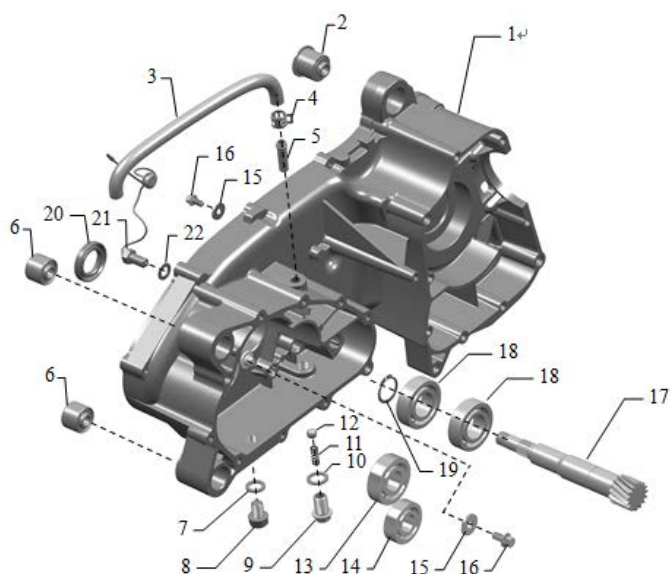
GOKART250 ELECTRICITY PRINCIPLE DIAGRAM





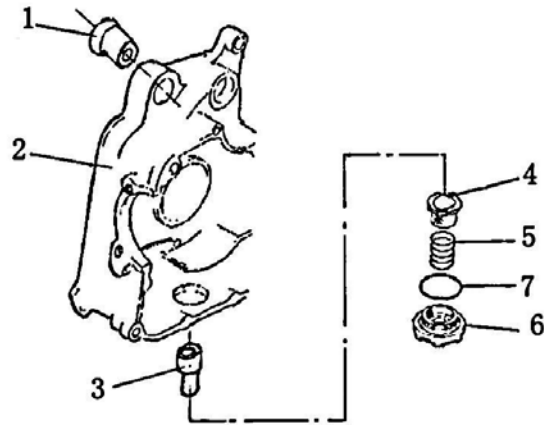
300 XRX
PARTS MANUAL
Version: 2 (9/19/2011)

FIG. 1 LEFT CRANKCASE COMP.



LEFT CRANKCASE COMP.			
REF NO.	PART NO.	DESCRIPTION	QTY
1-1	169-4.03.111	LEFT CRANKCASE	1
1-2	169.12.104	FRONT ABSORBER BUSING SET	1
1-3	157-3.12.159	GEARBOX AIR TUBE	1
1-4	157-3.11.410	SNAP RING	1
1-5	157-3.03.615	TUBE CONNECTOR	1
1-6	157-3.12.105	REAR ABSORBER BUSHING SET	2
1-7	139.11.822	WASHER (AL) 12X20X1.5	1
1-8	152.11.306	FLANGE BOLT M12X1.5	1
1-9	157-3.11.307	TRANSMISSION HUB POSITIONING BOLT	1
1-10	157-3.11.834	WASHER (AL) 14X22X1.3	1
1-11	157-3.10.829	TRANSMISSION HUB POSITIONING SPRING	1
1-12	GB/T308 10	STEEL BALL S Φ 10.319	1
1-13	GB/T 276 6203	BALL BEARING 6203	1
1-14	GB/T 276 6202	BALL BEARING 6202	1
1-15	157-3.11.858	WASHER (ST) 6X18X1.8	2
1-16	GB/T16674.1	FLANGE BOLT M6X12	2
1-17	169-4.10.411	INPUT SHAFT	1
1-18	GB/T 276 6205	BALL BEARING 6205	2
1-19	GB/T894.1-A 25	SNAP RING FOR SHAFT 25	1
1-20	169.12.412	OIL SEAL 25X42X7	1
1-21	157-3.10.823	IDLE PARTS	1
1-22	157-3.11.849	WASHER (AL) 10X18X1.3	1

FIG. 2
RIGHT CRANKCASE COMP.

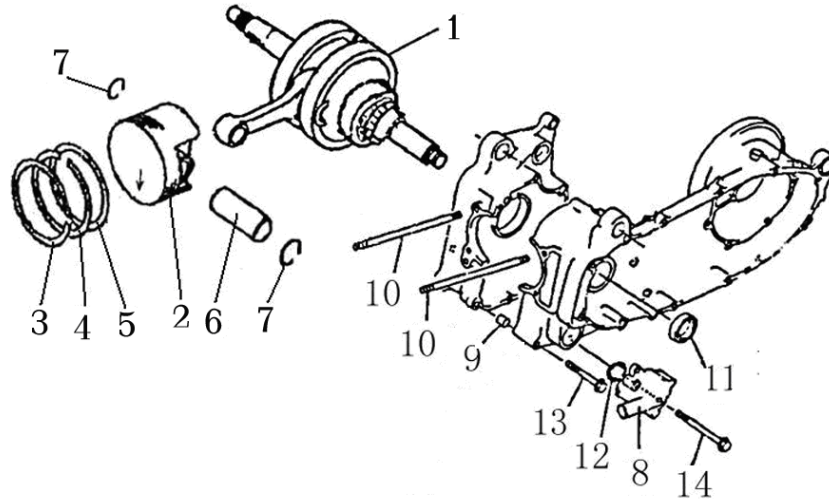


RIGHT CRANKCASE COMP.			
REF NO.	PART NO.	DESCRIPTION	QTY
2-1	169.12.104	FRONT ABSORBER BUSHING SET	1
2-2	169.03.211	RIGHT CRANKCASE	1
2-3	169.09.414	FILTER OIL TUBE	1
2-4	169.09.412	FILTER ELEMENT	1
2-5	169.09.413	FILTER SPRING	1
2-6	169.09.411	FILTER COVER	1
2-7	169.12.524	O-RING 36X3.5	1

FIG. 3

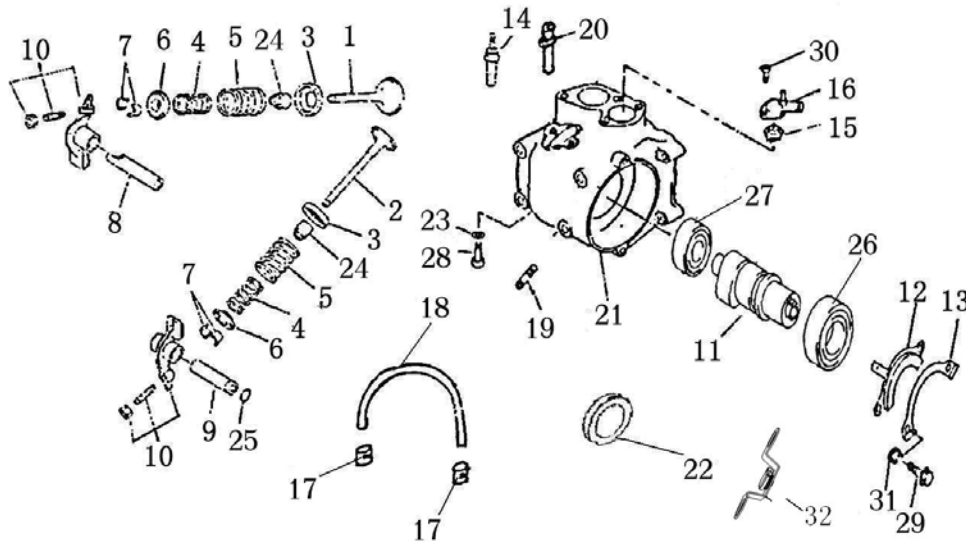
PARTS OF PISTON, BRANCE, LEFT AND RIGHT

CRANKCASE



PARTS OF PISTON, BRANCE, LEFT AND RIGHT CRANKCASE			
REF NO.	PART NO.	DESCRIPTION	QTY
3-1	169-4.01.110	BRANCE	1
3-2	169.01.311	PISTON	1
3-3	169.01.321	FIRST RING	1
3-4	169.01.322	SECOND RING	1
3-5	169.01.323	OIL RING ASSY.	1
3-6	169.01.312	PISTON PIN	1
3-7	169.01.313	PISTON PIN CIRCLIP	2
3-8	169.05.410	WATER PUMP COMP.	1
3-9	157-3.11.508	PIN 10X14	2
3-10	169.11.215	DOUBLE-SCREW LONG BOLT	4
3-11	169.12.416	OIL SEAL 30X45X5	1
3-12	169.12.522	O-RING 33.5X2.65	1
3-13	GB/T 16674.1 M6×70	BOLT M6X70	4
3-14	GB/T 16674.1 M6×100	BOLT M6X100	5
(3-15)	169.01.320	PISTON RING COMP. (3-3, 4, 5)	1
(3-16)	169.01.321	PISTON COMP. (3-2,3,4,5)	1

FIG. 4
CYLINDER HEAD COMP.

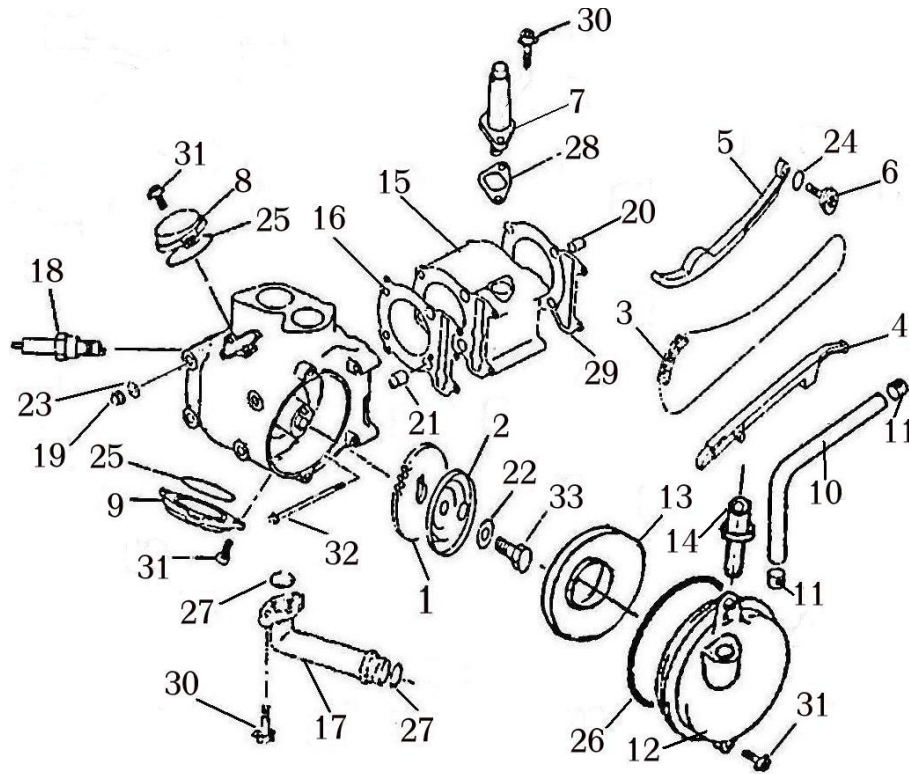


CYLINDER HEAD COMP.			
REF NO.	PART NO.	DESCRIPTION	QTY
4-1	169.02.311	INTAKE VALVE	1
4-2	169.02.312	EXHAUST VALVE	1
4-3	169.02.315	LOWER VALVE SPRING SEAT	2
4-4	169.02.313	INSIDE VALVE SPRING	2
4-5	169.02.314	OUTSIDE VALVE SPRING	2
4-6	169.02.315	UPPER VALVE SPRING SEAT	2
4-7	169.02.317	VALVE LOCKING CIRCLIP	4
4-8	169.02.112	INTAKE ARM SHAFT	1
4-9	169.02.113	EXHAUST ARM SHAFT	1
4-10	169.02.120	ARM COMP.	2
4-11	169.02.210B	CAM SHAFT	1
4-12	169.11.120	CAM SHAFT CLAMP	1
4-13	169.11.121	CLAMP OUTSIDE SPACER	1
4-14	169.05.712	WATER TEMPERATURE INDUCTOR	1
4-15	169.05.720	THERMOSTAT COMP.	1
4-16	169.05.730	THERMOSTAT COVER COMP.	1
4-17	152.11.407	SMALL WATER TUBE CIRCLIP	2
4-18	169.12.201	SMALL WATER TUBE	1
4-19	169.11.210	EXHAUST TUBE DOUBLE-SCREW BOLT	2
4-20	169.04.223	SMALL WATER CONNECTOR	1
4-21	169.04.210B	CYLINDER HEAD MECH. COMP.	1

4-22	169.08.490	EXHAUST TUBE SEAL GASKET	1
4-23	169.11.801	OIL PRESSURE INDICATOR COPPER WASHER	1
4-24	169.12.402	VALVE STEM OIL SEAL	2
4-25	169.12.507	O-RING 9X2	1
4-26	GB/T 276 6005	BALL BEARING	1
4-27	GB/T 276 6202-RS	BALL BEARING	1
4-28	GB/T 5789 M6×12	BOLT M6X12	1
4-29	GB/T 16674.1 M6×12	BOLT M6X12	2
4-30	GB/T16674.1 M6×20	BOLT M6X20	2
4-31	GB/T859 6	SPRING WASHER	2
4-32	169.02.130	ONE-WAY STOP DEVICE	1
(4-33)	169.02.200B	CAM SHAFT COMP. (INCL.11, 26, 27)	1

FIG. 5

CYLINDER / TIMING CHAIN DRIVER / VALVE COVER

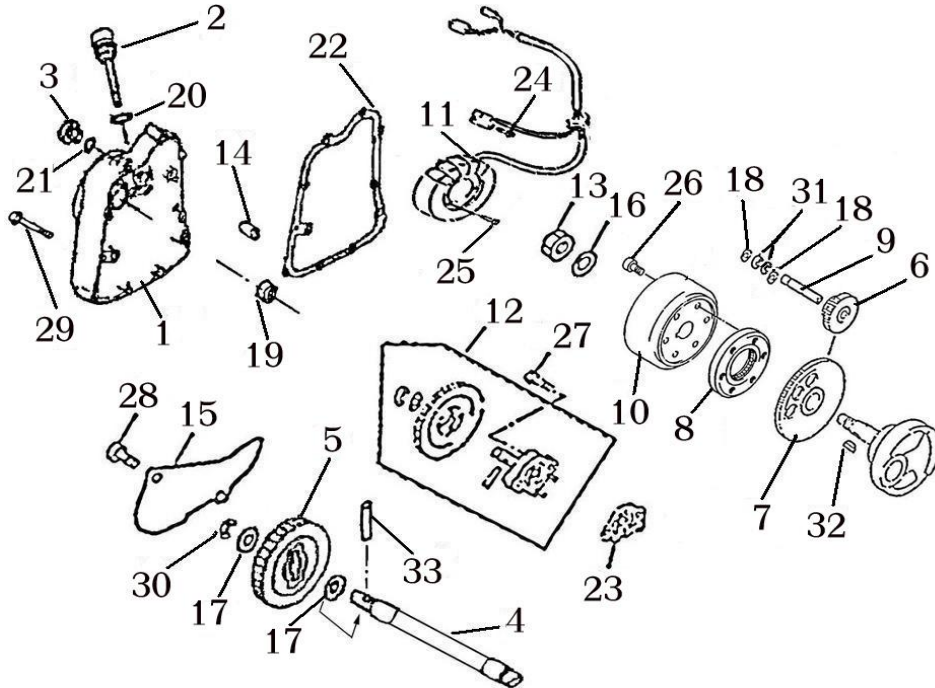


CYLINDER / TIMING CHAIN DRIVER / VALVE COVER			
REF NO.	PART NO.	DESCRIPTION	QTY
5-1	169.02.212	TIMING DRIVEN SPROCKET	1
5-2	169.04.261	SPROCKET COVER	1
5-3	169.02.510	TIMING CHAIN	1
5-4	169.02.710	CHAIN GUIDING PLATE	1
5-5	169.02.610	TENSIONING PLATE	1
5-6	169.02.506	TENSIONING PLATE SCREW	1
5-7	169.02.410	TENSIONING DEVICE COMP.	1
5-8	169.02.221	INTAKE VALVE COVER	1
5-9	169.02.222	EXHAUST VALVE COVER	1
5-10	169.12.158	SPROCKET ROOM COVER AIR TUBE	1
5-11	169.11.411	TUBE CIRCLIP	2
5-12	169.04.261	SPROCKET ROOM COVER	1
5-13	169.11.124	BREATHER PLATE	1
5-14	169.04.312	BREATHER PIPE CONNECTOR	1
5-15	169.04.110	CYLINDER	1

5-16	169.12.319	CYLINDER HEAD SPACER COMP.	1
5-17	169.05.711	PUMP DISCHARGE ELBOW	1
5-18	169.07.210	SPARKING PLUG	1
5-19	169.11.313	COVER BOLT M8	4
5-20	157-3.11.508	PIN 10X14	2
5-21	169.11.509	PIN 14X16	2
5-22	169.11.806	SPROCKET SPACER 10X22X2.5	1
5-23	169.11.811	CYLINDER HEAD COPPER SPACER 8X18X2	4
5-24	169.12.514	O-RING 14.5X1.8	1
5-25	169.12.526	O-RING 57.5X2.3	2
5-26	169.12.527	O-RING 94X3.3	1
5-27	169.12.516	O-RING 15.5X2.5	2
5-28	169.12.306	TENSIONING DEVICE SPACER	1
5-29	169.12.304	CYLINDER PAPER SPACER	1
5-30	GB/T16674.1 M6×16	BOLT M6X16	4
5-31	GB/T16674.1 M6×20	BOLT M6X20	7
5-32	GB/T16674.1 M6×120	BOLT M6X120	2
5-33	GB/T5786 M10×1.25×25	BOLT M10X1.25X25	1
(5-34)	169.02.800	SPROCKET ROOM COVER COMP. (5-12,13,14,26)	1

FIG. 6

**RIGHT COVER / MAGNETOR / ENGINE OIL PUMP /
PUMP / ELECTRIC START DRIVING**

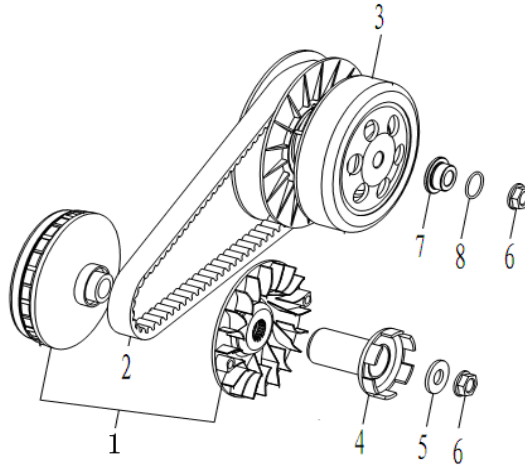


**RIGHT COVER / MAGNETOR / ENGINE OIL PUMP / PUMP /
ELECTRIC START DRIVING**

REF NO.	PART NO.	DESCRIPTION	QTY
6-1	169.03.411	RIGHT COVER	1
6-2	169.09.415	OIL GAUGE	1
6-3	169.03.412	PEEP DOOR SCREW PLUG	1
6-4	169.05.511	PUMP DRIVE SHAFT	1
6-5	169.05.512	PUMP GEAR	1
6-6	169.06.260	ELECTRIC START INTERMEDIATE GEAR COMP.	1
6-7	IN 169.06.310	FREE-WHEELING CLUTCH INNER RING	1
6-8	IN 169.06.310	FREE-WHEELING CLUTCH OUTER RING COMP.	1
6-9	169.06.271	INTERMEDIATE GEAR SHAFT	1
6-10	IN 169.07.110	MAGNETOR FLYING WHEEL	1
6-11	IN 169.07.110	MAGNETOR STATOR	1
6-12	169.09.110	ENGINE OIL PUMP COMP.	1

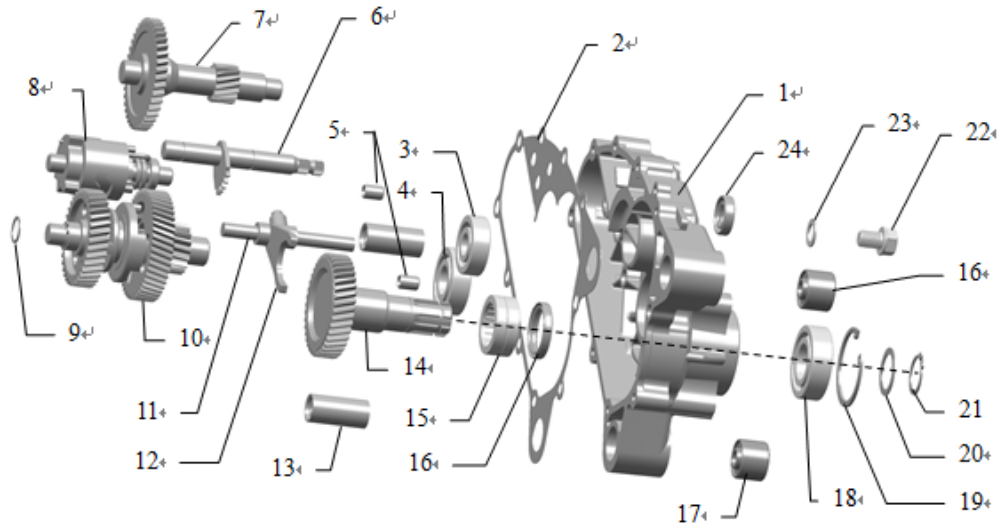
6-13	169.11.313	CRANKCASE RIGHT SIDE NUT M16X1	1
6-14	157-3.11.508	PIN 10X14	2
6-15	169.11.204	COVER PLATE	1
6-16	169.11.843	CRANKCASE RIGHT SIDE SPACER	1
6-17	169.11.859	PUMP GEAR SPACER	2
6-18	169.11.818	ELECTRIC START INTERMEDIATE SHAFT SPACER	2
6-19	169.12.403	RIGHT COVER CAMSHAFT OIL SEAL	1
6-20	169.12.517	O-RING 18X2.65	1
6-21	169.12.513	O-RING 14X2.65	1
6-22	169.12.302	RIGHT COVER PAPER SPACER	1
6-23	169.12.311	ENGINE OIL PUMP PAPER SPACER	1
6-24	GB/T 70.1 M5×12	SCREW M5×12	2
6-25	GB/T 70.1 M5×25	SCREW M5×25	3
6-26	GB/T 70.1 M8×18	SCREW M8×18	3
6-27	GB/T70.2 M6×25	SCREW M6×25	2
6-28	GB/T16674.1 M6×16	BOLT M6×16	2
6-29	GB/T16674.1 M6×40	BOLT M6×40	10
6-30	GB/T894.1 8	SNAP RING FOR SHAFT 8	1
6-31	GB/T 894.1 12	SNAP RING FOR SHAFT 12	2
6-32	GB/T1099.1 5×5.5×16	WOODRUFF KEY 5×5.5×16	1
6-33	GB/T119 B3×22	PIN B3X22	1
(6-34)	169.03.600	RIGHT CRANKCASE COVER COMP. (6-1,2,3,11,19,20,21,24,25)	1
(6-35)	169.05.410	PUMP COMP. (6-4,5,17,30,33)	1
(6-36)	169.06.310	FREE-WHEELING CLUTCH COMP. (6-7,8)	1
(6-37)	169.07.110	MAGNETOR COMP. (6-10,11)	1

FIG. 7
V-BELT DRIVING



V-BELT DRIVING			
REF NO.	PART NO.	DESCRIPTION	QTY
7-1	169.10.110	DRIVE COMP.	1
7-2	169.10.310	V BELT	1
7-3	169.10.210	CLUTCH, DRIVEN PULLEY COMP.	1
7-4	152.03.323	HAND STARTING PART	1
7-5	157-3.11.838	WASHER 15	1
7-6	169.11.312	FLANGE BOLT M14X1	2
7-7	169.10.412	CLUTCH BRACKET BUSHING	1
7-8	139.12.520	O-RING 21X2	1

FIG. 8
GEARBOX DRIVING

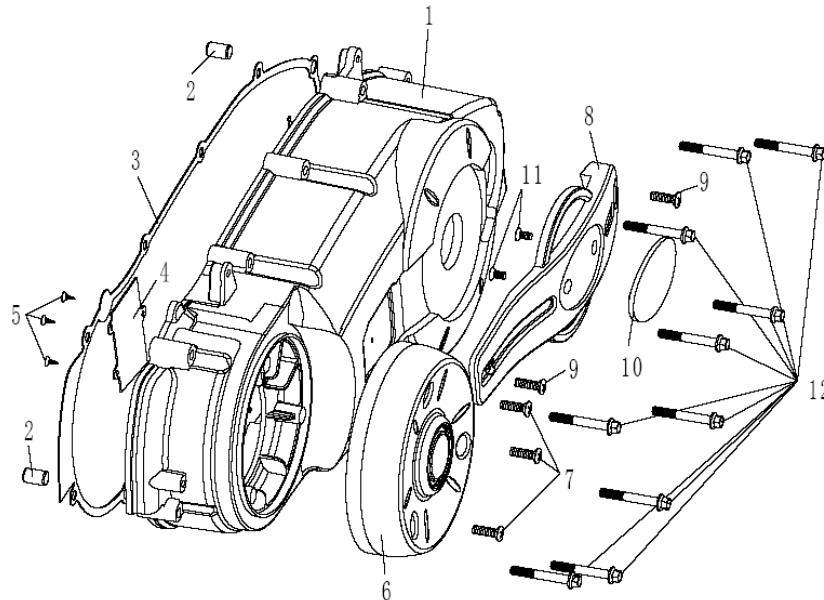


GEARBOX DRIVING			
REF NO.	PART NO.	DESCRIPTION	QTY
8-1	157-3.03.501	GEARBOX COVER	1
8-2	157-3.12.305	GEARBOX COVER SPACER	1
8-3	GB/T276 6302	BALL BEARING 6302	1
8-4	GB/T276 6204	BALL BEARING 6204	1
8-5	157-3.11.508	PIN Ø10×14	2
8-6	157-3.10.760	TRANSMISSION SHAFT COMP.	1
8-7	157-3.10.710	REVERSE SHAFT COMP.	1
8-8	157-3.10.610	TRANSMISSION DRUM COMP.	1
8-9	157-3.11.836	WASHER (ST) 15×19×1	1
8-10	169-4.10.420	SHIFTING SHAFT COMP.	1
8-11	157-3.10.820	DECLUTCH SHIFT SHAFT	1
8-12	157-3.10.821	DECLUTCH SHIFT	1
8-13	157-3.03.612	SHORT SHAFT	2
8-14	169-4.10.450	OUTPUT GEAR SHAFT	1
8-15	GB/T5801 RNA4905	NEEDLE BEARING RNA4905	1
8-16	157-3.12.415	OIL SEAL 30×40×6	1
8-17	157-3.12.105	REAR ABSORBER BUSHING	2
8-18	GB/T276 6205	BALL BEARING 6205—2RS	1
8-19	GB/T893.1 52	SNAP RING 52	1
8-20	157-3.11.849	WASHER 25×34×1	1
8-21	GB/T894.1 25	SNAP RING 25	1
8-22	152.11.822	DRAIN PLUG M12×1.5	1
8-23	152.11.306	WASHER 12×20×1.5	1
8-24	157-3.12.404	OIL SEAL 14×28×7	1

FIG. 9

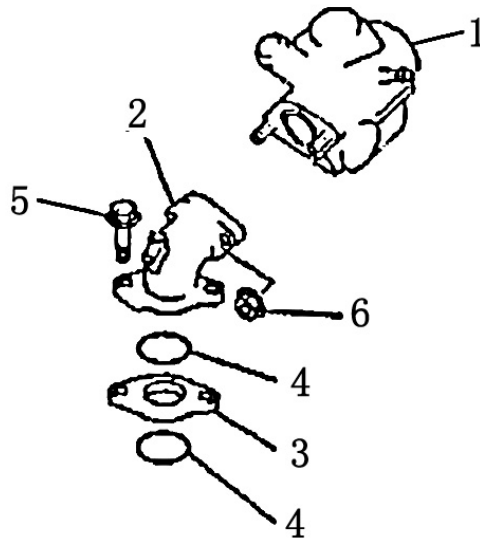
JINGLANG TYPE-RUYI LEFT COVER COMP.

(169.03.400B)



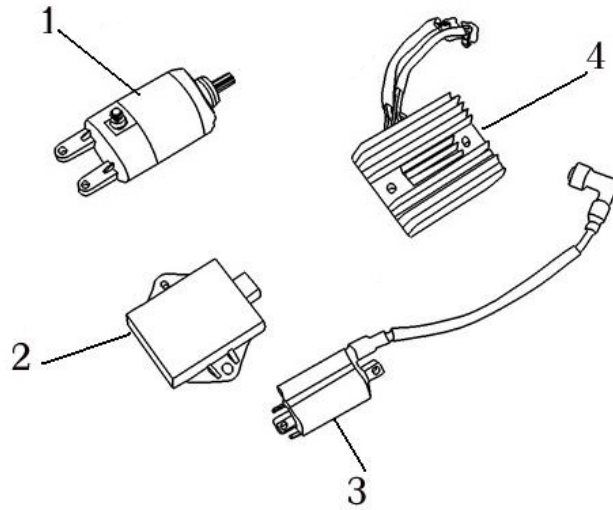
JINGLANG TYPE-RUYI LEFT COVER COMP. (169.03.400B)			
REF NO.	PART NO.	DESCRIPTION	QTY
9-1	169.03.311B	LEFT CRANKCASE COVER (RUYI STYLE)	1
9-2	157-3.11.508	PIN Ø10×14	2
9-3	169.12.302	LEFT CRANKCASE COVER SPACER	1
9-4	169.11.119B	L. CRANK CASE COVER PLATE	2
9-5	GB/T 845	TAPPING SCREW ST3.5×8	3
9-6	169.03.315	FRONT COVER COMP.	1
9-7	GB/T818	SCREW M6×20	3
9-8	152.03.320	REAR COVER	1
9-9	GB/T 818	SCREW M5×16	2
9-10	152.03.312	NAME PLATE COVER	1
9-11	GB/T 818	SCREW M5×10	2
9-12	GB/T16674.1	FLANGE BOLT M6×40	10

FIG. 10
INTAKE PIPE, CARBURETOR



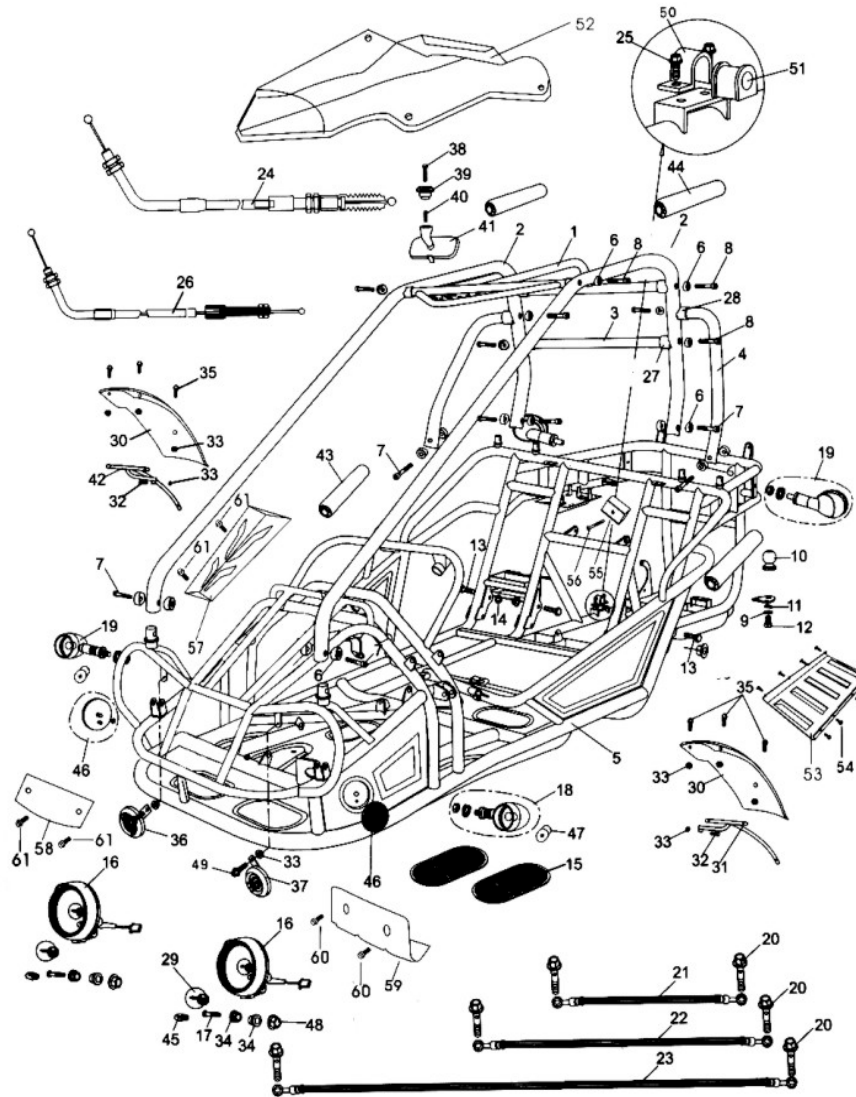
INTAKE PIPE, CARBURETOR			
REF NO.	PART NO.	DESCRIPTION	QTY
10-1	169.08.100	CARBURETOR COMP.	1
10-2	169.08.210	INTAKE PIPE COMP.	1
10-3	169.08.260	INTAKE PIPE INSULATION SPACER	1
10-4	169.12.523	O-RING 35X2	2
10-5	GB/T 16674.1 M6X25	BOLT M6X25	2
10-6	GB/T6177.1 M6	NUT M6	2

FIG. 11
ELECTRIC PARTS



ELECTRIC PARTS			
REF NO.	PART NO.	DESCRIPTION	QTY
11-1	169.06.110	STARTOR COMP.	1
11-2	169.07.410	IGNITOR	1
11-3	169.07.310	IGNITION COIL	1
11-4	169.07.510	RECTIFIER COMP. REGULATE	1

FIG. 13
FRAME GROUP

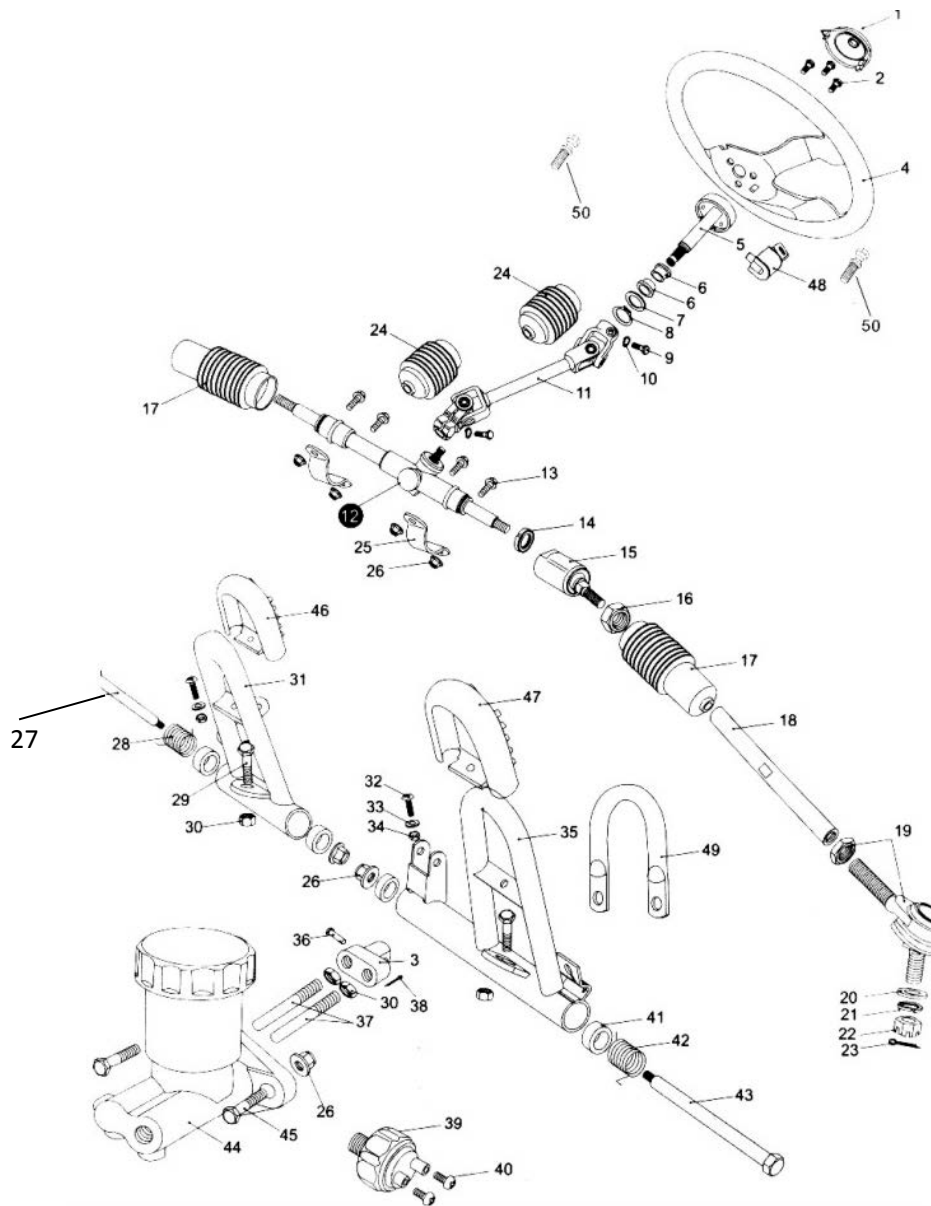


FRAME GROUP			
REF NO.	PART NO.	DESCRIPTION	QTY
13-1	6.000.061	C.B.C.CROSS BAR,(B.R.S.)	1
13-2	8.070.034-250	C.B.C.BAR CAGE(B.R.S.)	2
13-3	8.080.033	C.B.C.CROSS BAR,RR(B.R.S.)	1
13-4	8.070.035	C.B.C.BAR,L./R.SIDE(B.R.S.)	2
13-5	2.010.045	FRAME COMP.(B.R.S.)	1
13-6	7.010.049	R-WASHER	18
13-7	9.908.050N	SOCKET BOLT M8*1.25*50	6
13-8	9.908.055N	SOCKET BOLT M8*1.25*55	10

13-9	9.300.016	WASHER ϕ 16	1
13-10	2.200.001	TOW BALL	1
13-11	9.400.016	LOCK WASHER ϕ 16	1
13-12	9.101.625	BOLT M16*25	1
13-13	9.112.025	BOLT-WASHER M12*1.25*25	4
13-14	9.220.012	LOCKING FLANGE NUT M12	4
13-15	7.020.012	RUBER FOOT FLATE	2
13-16	6.000.104	HEADLIGHT UNIT	2
13-17	9.108.050	BOLT-WASHER M8*1.25*50	2
13-18	6.000.155	WINKER LIGHT ASSY.L.FR./R.RR.	2
13-19	6.000.156	WINKER LIGHT ASSY.R.FR./L.RR.	2
13-20	9.700.004	BANJO BOLT M10*24	6
13-21	6.000.089	BRAKE HOSE ASSY.L. 34"	1
13-22	6.000.090	BRAKE HOSE ASSY.R. 43"	1
13-23	6.000.230	BRAKE HOSE ASSY.RR. 80"	1
13-24	6.000.232-300G	THROTTLE CABLE COMP.	1
13-25	9.106.012	BOLT M6*12	6
13-26	6.000.231-300G	PARKING BRAKE CABLE COMP.	1
13-27	7.010.017	TUBE SEAT ϕ 35	6
13-28	7.010.016	TUBE SEAT ϕ 32	2
13-29	9.090.003	HEADLIGHT BULB 35W/35W/12V	2
13-30	7.110.034	FENDER,FR.	2
13-31	6.100.067	FRONT FENDER BRACKET,L.	1
13-32	9.100.640	BOLT M6*40	2
13-33	9.210.008	LOCKING FLANGE NUT M8	10
13-34	7.020.049	HEADLIGHT RUBBER MOUNT	4
13-35	9.106.014	BOLT-WASHER M6*14	6
13-36	6.000.135	HORN,H.	1
13-37	6.000.136	HORN,L.	1
13-38	9.100.525	BOLT M5*25	1
13-39	8.010.086	REAR MIRROR MOUNT	1
13-40	8.040.005	REAR VIEW MIRROR SPRING	1
13-41	6.000.084	REAR MIRROR ASSY.	1
13-42	6.100.102	FRONT FENDER BRACKET,R.	1
13-43	6.000.083	FOAM PADDING-1	2
13-44	6.000.116	FOAM PADDING-2	2
13-45	9.000.004-A	POSITION LIGHT BULB 3W 12V	2
13-46	6.000.144	FRONT REFLECTOR	2
13-47	9.090.006	WINKER BULB 10W 12V	4
13-48	9.220.008	LOCKING FLANGE NUT M8	2
13-49	9.106.012	BOLT M6*12	2
13-50	2.100.002	SWAY BAR BRACE	3
13-51	2.100.001	SWAY BAR BRACE BUSHING	3
13-52	6.100.061	AWNING	1

13-53	7.110.030	WIND GUIDE	1
13-54	9.100.612	SCREW M6*12	8
13-55	7.120.010	RUBBER PIECE	1
13-56	9.100.640	BOLT M6*40	1
13-57	9.131.192	DECORATION PLATE I	1
13-58	9.130.192	DECORATION PLATE II	1
13-59	9.312.192	PROTECTING PLATE	1
13-60	2.041.076	BOLT M8*10	2
13-61	5.120.074	BOLT M6*20	4

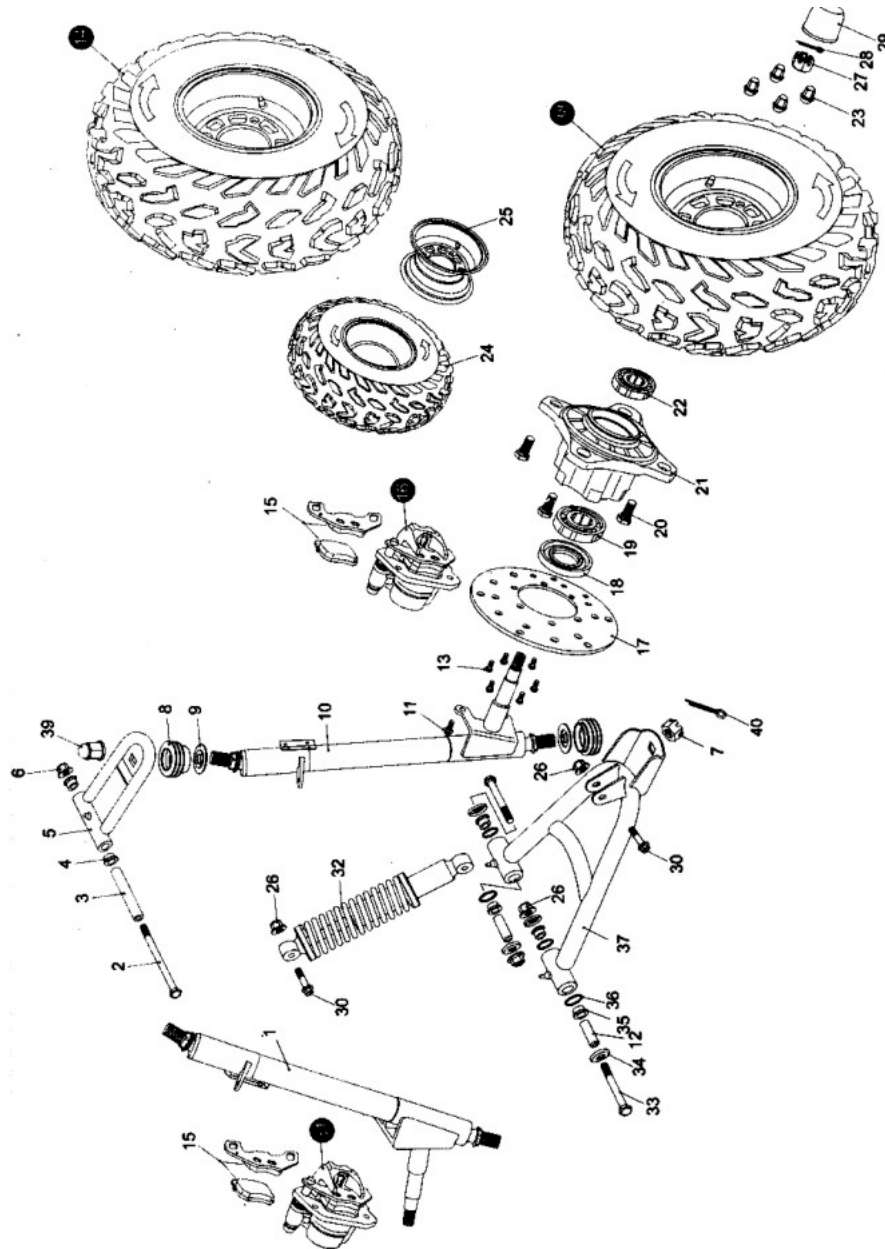
FIG. 14
STEERING SHAFT ASSY.



STEERING SHAFT ASSY.			
REF NO.	PART NO.	DESCRIPTION	QTY
14-1	7.010.041	STEERING BOLT COVER	1
14-2	9.100.612	SCREW M6*12	3
14-3	8.030.024	SPINDLE WHEEL	1
14-4	7.020.038	STEERING WHEEL	1
14-5	6.000.122	STEERING SHAFT	1
14-6	6.017.001	NEEDLE NK2016	2
14-7	9.700.020	SPECIAL WAHER ϕ 20	1
14-8	9.700.120	CIRCLIP ϕ 20	1

14-9	9.100.825	BOLT M8*25	2
14-10	9.400.008	LOCK WASHER ϕ 8	2
14-11	6.000.093-250	STEERING KNUCKLE	1
14-12	4.000.014	STEERING GEAR	1
14-13	9.108.025	BOLT-WASHER M8*1.25*25	4
14-14	9.900.016	ROUND NUT M16*1.5	2
14-15	4.000.008-250	STEERING GEAR45 DEGREE ANGLE	2
14-16	9.200.010	NUT M10	2
14-17	7.020.002	BALL JIONT DUST COVER	2
14-18	8.010.157	TIE ROD	2
14-19	6.000.062	ROD END	2
14-20	9.300.010	FLAT WASHER ϕ 10	2
14-21	9.400.010	LOCK WSAHER ϕ 10	2
14-22	9.800.010	CASTLE NUT ϕ 10	2
14-23	9.500.215	COTTER PIN ϕ 2*15	2
14-24	7.020.066	STEERING KNUCKLE DUST COVER	2
14-25	8.020.014	STEERING GEAR BRACKET	2
14-26	9.220.008	LOCKING FLANGE NUT M8	8
14-27	9.708.145	THRRORLE PEDAL BOLT M8*1.25*145	1
14-28	8.040.001	THROTTLE PEDAL RETURN SPING,L.	1
14-29	9.108.040	BOLT-WASHER M8*1.25*40	2
14-30	9.200.008	NUT M8	2
14-31	4.000.016	THROTTLE PEDAL COMP.	1
14-32	9.600.515	PAN SCREW M5*15	2
14-33	9.300.005	FLAT WASHER ϕ 5	2
14-34	9.210.005	NYLON LOCK NUT M5	2
14-35	4.000.015	BRAKE PEDAL COMP.	1
14-36	9.700.624	PIN ϕ 6*24	1
14-37	8.010.081	SPINDLE PIN	2
14-38	9.500.212	COTTER PIN ϕ 2*12	1
14-39	6.000.063	BRAKE LAMP SWITCH ASSY.	1
14-40	9.600.306	PAN SCREW M3*6	2
14-41	7.010.004	PEDAL BUSH	4
14-42	8.040.007	BRAKE PEDAL RETURN SPRING ,R.	1
14-43	9.708.222	BRAKE PEDAL BOLT M8*1.25*222	1
14-44	6.000.076	MASTER CYLINDER	1
14-45	9.108.035	BOLT-WASHER M8*1.25*35	2
14-46	7.020.036	THROTTLE PEDAL PAD	1
14-47	7.020.037	BRAKE PEDAL PAD	1
14-48	6.000.134	STEERING WHEEL LOCK	1
14-49	8.070.044	MASTER CYLINDER BRACKET	1
14-50	8.016.043	BOLT M6*19	2

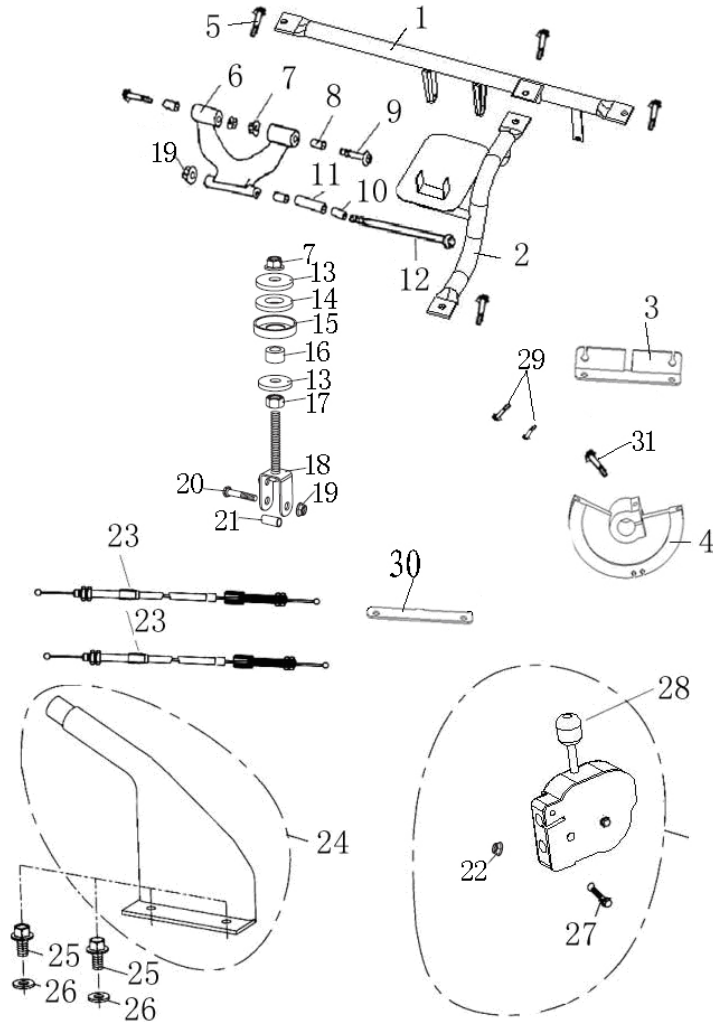
FIG. 15
FRONT SUSPENSION ASSY.



FRONT SUSPENSION ASSY.			
REF NO.	PART NO.	DESCRIPTION	QTY
15-1	2.000.028-SS	STRUT AND SPINDLE SUPPORT,R.WITH BRACKET-BLACK	1
15-2	9.108.105	BOLT-WASHER M8*1.25*105	2
15-3	8.010.015	UPPER SUSPENSION ARM COLLAR	2
15-4	7.010.003	UPPER SUSPENSION ARM BUSH	4

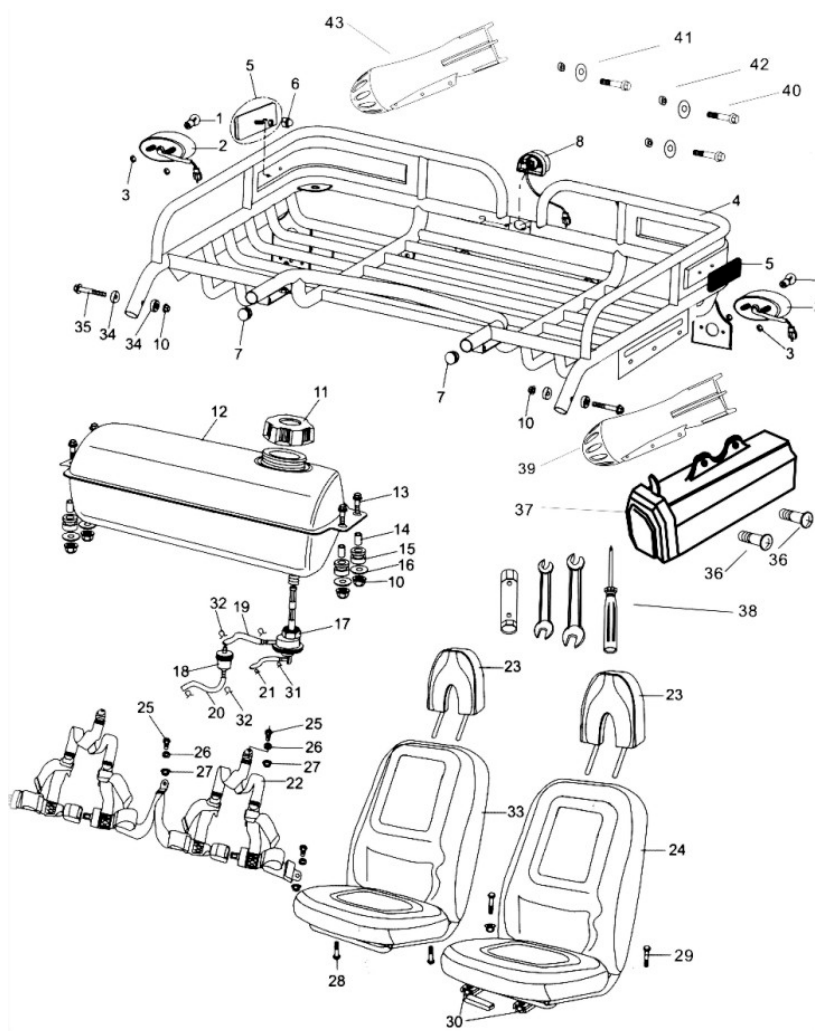
15-5	4.000.004	UPPER SUSPENSION ARM	2
15-6	9.220.008	LOCKING FLANGE NUT M8	2
15-7	9.800.012	CASTLE NUT M12	2
15-8	7.020.025	BALL HEAD DUST SEAL	4
15-9	8.020.053	BALL HEAD SPACER	4
15-10	2.000.027-SS	STRUT AND SPINDLE SUPPORT,L.WITH BRACKET-BLACK	1
15-11	9.908.104	BOLT M8*14	4
15-12	8.010.014	LOWER SUSPENSION ARM COLLAR	4
15-13	9.906.012	BOLT STRAP M6*12	12
15-14	6.000.141	FR.WHEEL ASSY.,R. 20*7-8	1
15-15	7.020.016	FR.BRAKE CALIPER PAD SET	2
15-16	6.000.028	FRONT BRAKE CALIPER,L.	1
15-17	8.010.054	BRAKE DISC.	2
15-18	9.040.002	DUST SEAL 47*25-7	2
15-19	9.030.002-Z	BEARING 6204-Z	2
15-20	9.710.031	CAP LUG NUT M10*1.25*31	8
15-21	8.010.085	WHEEL HUB	2
15-22	9.030.010-Z	BEARIG 6202-Z	2
15-23	8.010.118	CAP LUG NUT M10	8
15-24	7.020.050	TIRE,FR.20*7-8	2
15-25	6.000.142B	RIM,FR.	2
15-26	9.220.010	LOCKING FLANGE NUT M10	8
15-27	9.800.014	CASTLE NUT M14	2
15-28	9.500.220	COTTER PIN ϕ 2*20	2
15-29	7.020.039	HUB COVER	2
15-30	9.110.040	BOLT-WASHER M10*1.25*40	4
15-31	6.000.095	FRONT BRAKE CALIPER,R.	1
15-32	6.000.325	CUSHION ASSY.,FR.L=325	2
15-33	9.110.080	BOLT-WASHER M10*1.25*80	4
15-34	8.020.034	LOWER SUSPENSION ARM DUSH CAP	8
15-35	7.010.002	LOWER SUSPENSION ARM BUSH	8
15-36	9.040.001	O-RING ϕ 21.2*2.65	8
15-37	4.000.023	LOWER SUSPENSION ARM ASSY.	2
15-38	6.000.140B	FR.WHEEL ASSY.,L. 20*7-8	1
15-39	8.010.140	ACORN M12	2
15-40	9.500.200	COTTER PIN ϕ 3.2*26	2

FIG. 16
FULL SHIFTING ASSY.



FULL SHIFTING ASSY.			
REF NO.	PART NO.	DESCRIPTION	QTY
16-1	58330-300GK	ENGINE MOUNT BRACKET I	1
16-2	58340-300GK	ENGINE MOUNT BRACKET II	1
16-3	40001-300GK	REVERSE CABLE FIXED PLATE	1
16-4	40002-300GK	SHIFTER DISK	1
16-5	578910020125	BOLT M10x1.25x20	4
16-6	58310300k000	FRONT ENGINE MOUNT BRACKET	1
16-7	618712000125	NUT M12x1.25	3
16-8	58320300k000	BUSHING ENGINE BRACKET 1	2
16-9	578712060125	ENGINE BRACKET BOLT	2
16-10	58330300k000	BUSHING ENGINE BRACKET 2	2
16-11	58002300k000	SPACER ENGINE BRACKET	1

16-12	578710225125	ENGINE MOUNTING BOLT M10x1.25x225	1
16-13	8.010.042	WASHER-CHAIN ADJUSTER (φ12xφ35x6)	2
16-14	7.020.001	CAP WASHER-CHAIN ADJUSTER	1
16-15	8.010.045	BOTTOM CAP WASHER-CHAIN ADJUSTER	1
16-16	8.010.041	BUSHING CHAIN ADJUSTER	1
16-17	617012000125	BOLT M12x1.25	1
16-18	6.000.026-CAA	CHAIN ADJUSTER ASSY.	1
16-19	618710000125	LOCKING FLANGE NUT M10x1.25	2
16-20	578510045125	BOLT M10x1.25	1
16-21	8.010.076	COLLAR ENGINE MOUNT BOLT PLATE	1
16-22	618708000125	LOCKING FLANGE NUT M 8x1.25	2
16-23	40010-300GK	REVERSE CABLE	2
16-24	6.000.233-250	PARKING BRAKE ASSY.	1
16-25	9.108.020	BOLT-WASHER M8X20X1.25	2
16-26	9.300.008	WASHER 8	2
16-27	578908020125	BOLT M8	1
16-28	40700-300GK	SHIFTER HOISE ASSY.	1
16-29	578906012100	NUT M6X12	2
16-30	58001-300GK	ENGINE FIXED PLATE. RR	1

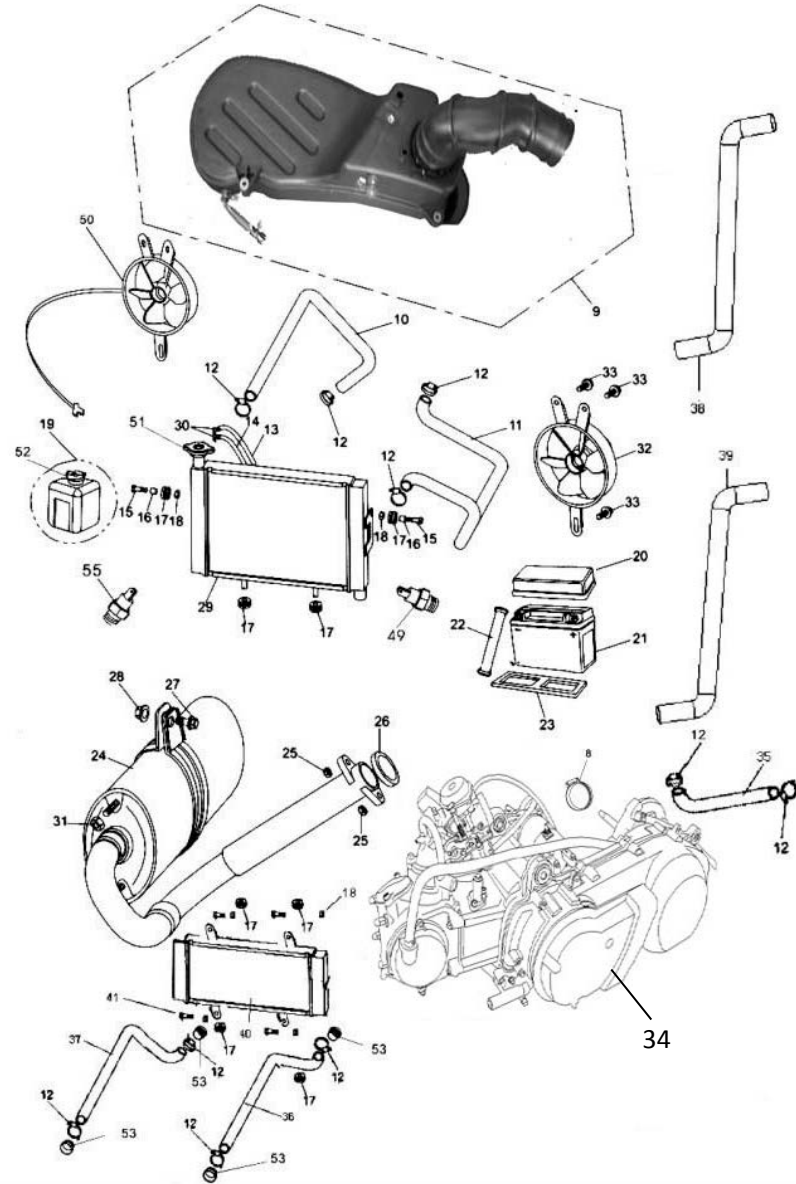
FIG. 17**REAR CARGO RACK / SEAT / BELT**

REAR CARGO RACK / SEAT / BELT			
REF NO.	PART NO.	DESCRIPTION	QTY
17-1	9.090.005	TAIL LIGHT BULB 21W/5W 12V	2
17-2	6.000.144	TAIL LIGHT	2
17-3	9.210.006	LOCK NYLON NUT M6	4
17-4	2.100.046-250	REAR CARGO RACK (B.R.S.)	1
17-5	6.000.111	REAR SIDE REFLECTOR	4
17-6	8.010.171	LUG NUT	2
17-7	7.020.032	TUBE COVER	2
17-8	6.000.241	LICENSE LIGHT ASSY.	2
17-9	9.804.003	SCREW ST3.5*10	4
17-10	9.220.008	LOCKING FLANGE NUT M8	6
17-11	6.000.145	FUEL TANK CAP COMP.	1

17-12	4.000.029	FUEL TANK COMP.(B.R.S.)	1
17-13	9.108.025	BOLT-WASHER M8*1.25*25	4
17-14	8.010.034	TANK COMP. COLLAR	4
17-15	7.020.005	RUBBER MOUNT	4
17-16	9.300.008	FLAT WASHER ϕ 8	4
17-17	6.000.046-250	FUEL AUTO COCK ASSY.NO/OFF VALVE	1
17-18	6.000.056	GAS FILTER	1
17-19	7.020.030	TUBE COMP.FUEL #1	1
17-20	7.020.029	TUBE COMP.FUEL #2	1
17-21	7.020.031	TUBE COMP.VACUUM	1
17-22	6.000.146	SAFETY BELT	1
17-23	6.000.262	HEAD-REST	2
17-24	6.000.264	SEAT COMP.L.	1
17-25	9.700.001	SPECIAL BOLT M7/16"*28	1
17-26	9.700.002	BELT WASHER ϕ 12	1
17-27	9.700.003	NUT BELT M7/A6"	1
17-28	9.900.840	BOLT STRAP M8*1.25*40	2
17-29	9.910.841	BOLT M8*1.25*45	2
17-30	6.000.057	SEAT RAIL SET	1
17-31	8.040.008	VACUUM TUBE	2
17-32	8.040.009	FUEL TUBE	4
17-33	6.000.263	SEAT COMP.R.	1
17-34	8.010.047	R-WASHER	4
17-35	9.908.055	BOLT M8*1.25*55	2
17-36	9.100.612	SCREW 6*12	2
17-37	7.110.002	TOOL KIT	1
17-38	7.110.003	TOOLS	1
17-39	4.000.037	AUXILIARY SPERKER	1
17-40	9.032.074	BOLT M6*20	6
17-41	9.300.005	FLAT WASHER ϕ 5	6
17-42	9.200.006	NUT M6	6
17-43	4.000.036	MAIN SPEAKER	1

FIG. 18

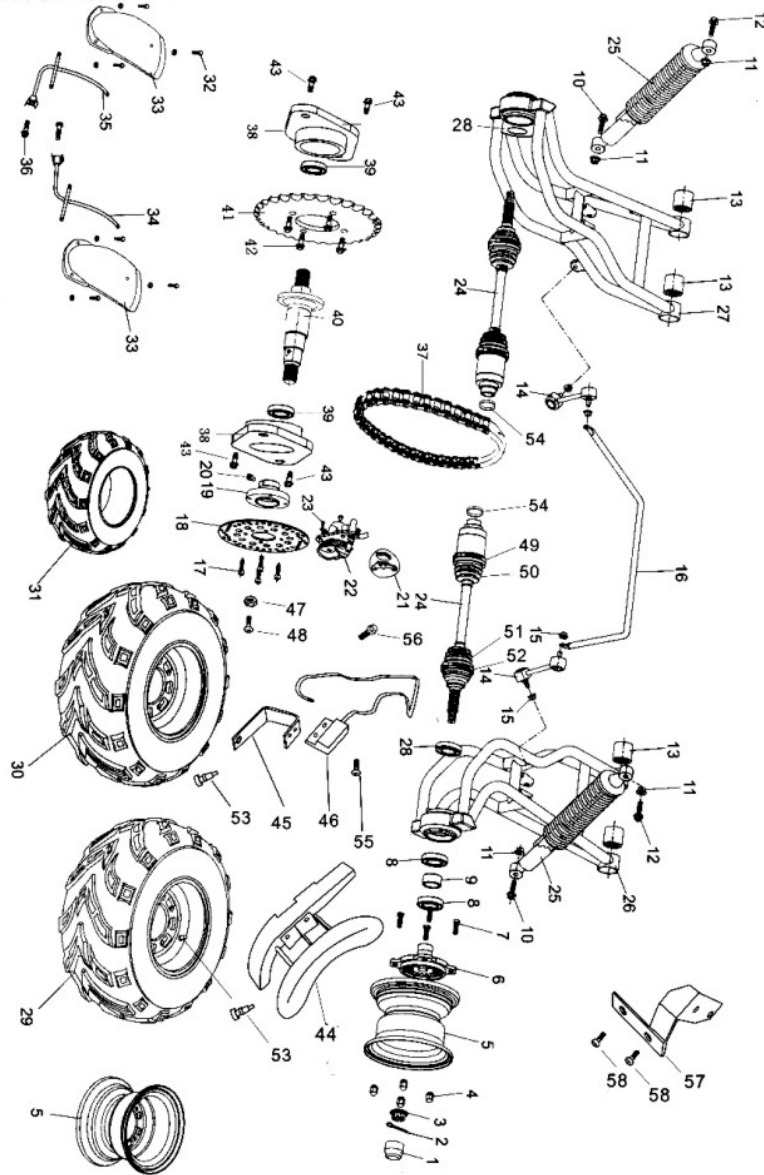
AIR CLEANER/RADIATOR/BATTERY/MUFFLER ASSY.



AIR CLEANER/RADIATOR/BATTERY/MUFFLER ASSY.			
REF NO.	PART NO.	DESCRIPTION	QTY
18-9	49000-300G	AIR CLEANER ASSY.	1
18-10	7.090.042	TUBE COMP.WATER 1#	1
18-11	7.190.043	TUBE COMP.WATER 2#	1
18-12	7.090.044	TUBE CLAMP	10
18-13	7.090.045	TUBE COMP.WATER 3#	1
18-14	7.090.046	TUBE COMP.WATER 4#	1

18-15	9.100.830	BOLT M8*30*1.25	2
18-16	7.090.047	RADIATOR COMP.COLLAR	2
18-17	7.020.069	RUBBER MOUNT	6
18-18	9.200.008	NUT M8	6
18-19	6.000.248	COLLANT TANK	1
18-20	7.010.028	BATTERY COVER	1
18-21	6.000.085	BATTERY (YTX12-BS)	1
18-22	7.021.023	BATTERY BAND	1
18-23	7.020.020	BATTERY LOWER	1
18-24	57100-300G	MUFFLER COMP.EX.	1
18-25	9.040.027	MUFFLER JOINT NUT M6	2
18-26	7.090.050	EX.PIPE GASKET	1
18-27	9.110.030	BOLT-WASHER M10*1.25*30	1
18-28	9.020.010	NUT M10	1
18-29	14210-300G	RADIATOR COMP.	1
18-30	7.090.051	TUBE CLAMP	2
18-31	9.200.006	NUT M6	2
18-32	6.100.249-300G	FAN COMP.	2
18-33	7.090.052	BOLT M6*10	6
18-34	10000-300G	300cc ENGINE	1
18-35	7.090.053	TUBE COMP WATER 5#	1
18-36	7.090.054	TUBE COMP WATER 6#	1
18-37	7.090.055	TUBE COMP WATER 7#	1
18-38	7.090.056	TUBE COMP WATER 1#	1
18-39	7.090.057	TUBE COMP WATER 2#	1
18-40	4.000.034	RADIATOR.COMP	1
18-41	9.100.625	BOLT M6*25	4
18-42	6.100.162-300G	BOOT.SIDE CASE	2
18-43	8.120.055-300G	CLAMP.BOOT	2
18-49	7.190.009	HEAT SENSITIVE SWICH	1
18-50	6.100.249N	FAN COMP2	1
18-51	4.000.033N	RADIATOR COMP COVER	1
18-52	6.000.248N	COLLANT TANK CAP	1
18-53	7.090.058	RUBBER STOPPER	4
(18-54)	8.020.166-250	250CC MUFFLER CLAMP	1
18-55	9.010.098	WATER TEMPERATURE INDUCTOR	1

FIG. 19
REAR SUSPENSION ASSY.



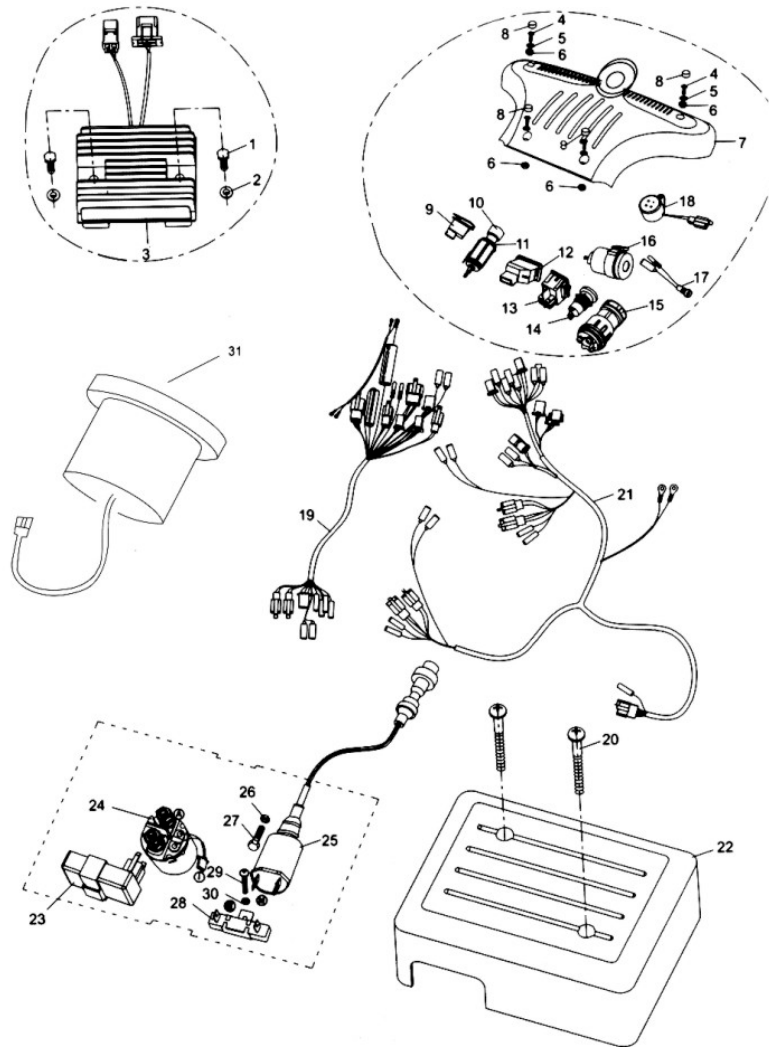
REAR SUSPENSION ASSY.			
REF NO.	PART NO.	DESCRIPTION	QTY
19-1	7.020.039	RR.HUB COVER	2
19-2	9.500.430	COTTER PIN ϕ 4*30	2
19-3	9.800.018	CASTLE NUT M18	2
19-4	8.010.118	LUG NUT CAP M10	8
19-5	6.000.143B	RIM RR.	2
19-6	8.010.169	REAR WHEEL HUB	2

19-7	9.710.031	TIRE BOLT M10*1.25*31	8
19-8	9.030.007	BEARING 6007	4
19-9	8.010.170	COLLAR	2
19-10	9.112.055	BOLT-WASHER M12*1.25*55	2
19-11	9.220.012	LOCKING FLANGE NUT M12	4
19-12	9.112.050	BOLT-WASHER M12*1.25*50	2
19-13	7.020.008	SWING ARM CUSHION BUSH	4
19-14	6.000.242	BALANCE LEVER LINK ROD	2
19-15	9.220.010	LOCKING FLANGE NUT M10*1.25	2
19-16	6.000.243	BALANCE LEVER	1
19-17	9.108.020	BOLT-WASHER M8*20*1.25	4
19-18	8.010.053-SS	RR.BRAKE DISC.	1
19-19	8.030.036	BRAKE DISC.W/SPEEDO MAGNET HOLE	1
19-20	9.101.018	BOLT M10*1.5*18	1
19-21	7.020.022-250	RR.BRAKE PAD SET	1
19-22	6.000.229-250-300G	CALIPER HYDRAULICAL BRAKE, RR.	1
19-23	9.908.014	ALLEN HEAD BOLE M8*1.25*16	2
19-24	6.000.244-C	CV/SHAFT JOINT	2
19-25	6.000.245	CUSHION ASSY., RR. L=480	2
19-26	6.000.247	SWING ARM COMP. R.	1
19-27	6.000.246	SWING ARM COMP.L.	1
19-28	9.040.011	DUST SEAL ϕ 62*44*10	2
19-29	6.000.148B	REAR WHEEL ASSY.,R.	1
19-30	6.000.147B	REAR WHEEL ASSY.,L.	1
19-31	7.020.052	TIRE ,RR.22*10-10	1
19-32	9.906.016	BOLT-WASHER M6*16	6
19-33	7.010.064	FENDER, RR.	2
19-34	6.100.068	REAR FENDER BRACKET ,R.	1
19-35	6.100.101	REAR FENDER BRACKET ,L.	1
19-36	9.105.045	BOLT-WASHER M8*1.25*45	2
19-37	9.170.002	CHAIN O-RING DRIVE	1
19-38	8.130.033	HOUSING COMP.PP AXLE BRG	2
19-39	9.030.011	BEARING E6007	2
19-40	8.110.057-300G	AXLE	1
19-41	8.110.077	REAR SPROCKET	1
19-42	9.112.030	BOLT-WASHER	4
19-43	9.112.027	BOLT-WASHER	4
19-44	7.190.010	PROTECTOR,DISK	1
19-45	7.190.011	BRACKET	1
19-46	7.190.012	SENSOR	1
19-47	7.190.013	AWICO	1
19-48	9.103.005	SCREW M3*5	1
19-49	7.190.014	CIRCLIP1	1
19-50	7.190.015	RUBBER BUSH1	1

19-51	7.190.016	RUBBER BUSH2	1
19-52	7.190.017	CIRCLIP2	1
19-53	7.190.018	TIRE NIPPLE	2
19-54	7.190.019	REAR AXLE CIRCLIP	2
19-55	7.120.081	SCREN M3*6	2
19-56	7.145.076	BOLT M6*16	2
19-57	8.020.410	BRACKET	1
19-58	9.220.006	LOCKING FLANGE NUT M6	2

FIG. 20

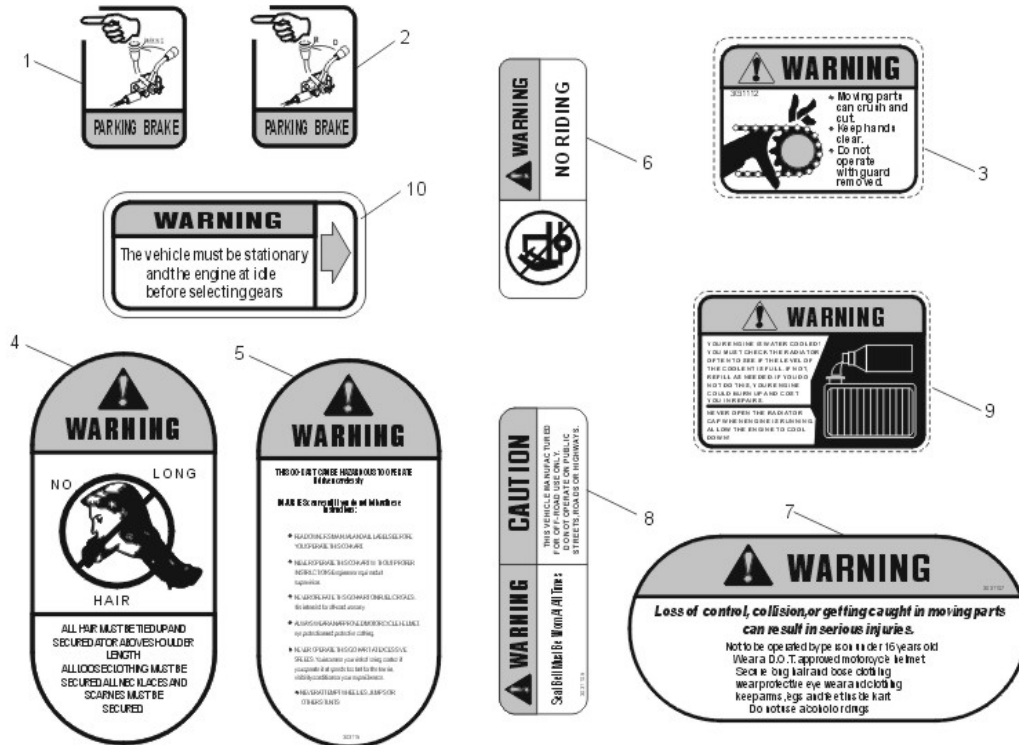
WIRE HARNESS / ELECTRIC PARTS



WIRE HARNESS / ELECTRIC PARTS			
REF NO.	PART NO.	DESCRIPTION	QTY
20-1	9.100.630	BOLT M6*30	2
20-2	9.200.006	NUT M6	2
20-3	6.000.250	REGULATE RECTIFIER COMP.	1
20-4	9.600.615	PAN SCREW M6*15	4
20-5	9.300.006	WASHER ϕ 6	4
20-6	9.210.005	LOCKING NYLON NUT M5	2
20-7	7.110.038	SWITCH PANEL COVER	1
20-8	7.010.061	BOLT COVER	4
20-9	6.000.079	HORN SWITCH	1

20-10	7.020.051	POWER OUTLET COVER	1
20-11	6.000.087	POWER OUTLET	1
20-12	6.000.113	WINKER SWITCH UNIT	1
20-13	6.000.160	DIMMER SWITCH UNIT	1
20-14	6.000.159	ENGINE STOP BUTTON	1
20-15	6.000.158	IGNITION START SWITCH	1
20-16	6.000.153	RELAY COMP.AUDIBLE PILOT&WINKER	1
20-17	6.000.251	TEMPERATURE BUZZER	1
20-18	6.000.252	HORN RECTIFIER	1
20-19	6.100.253	SOCKET COMP.	1
20-20	9.600.655	PAN SCREW M6*55	2
20-21	6.100.254	WIRE HARNESS	2
20-22	7.010.029	ELECTRIC ASSY.COVER	1
20-23	80018-300K	C.D.I.UNIT COMP.	1
20-24	6.000.256	STARTING RELAY	1
20-25	80016-300K	IGNITION COIL COMP.	1
20-26	9.210.006	LOCK NYLON NUT M6	1
20-27	9.600.525	PAN SCREW M5*25	1
20-28	6.000.038	RESISTOR COMP.10W 10	1
20-29	9.600.410	PAN SCREW M4*10	1
20-30	9.210.004	LOCK NYLON NUT M4	1
20-31	4.000.038-250	SPEEDOMETER WITH HI/LO	1

FIG. 21
WARNING STICKERS



WARNING STICKERS			
REF NO.	PART NO.	DESCRIPTION	QTY
21-1	9.090.007	LABEL. PARKING BRAKE	1
21-2	9.090.008	LABEL.REVERSE LEVER	1
21-3	9.090.023	LABEL.GEAR CASE	1
21-4	9.090.010	LABEL.NO LONG HAIR	1
21-5	9.090.011	LABEL.WARNING	1
21-6	9.090.012	LABEL.NO CLIMBING	1
21-7	9.090.013	LABEL.WARNING	1
21-8	9.090.014	LABEL.SEAT BELT	1
21-9	9.090.024	LABEL.RADIATOR	1
21-10	9.090.017	LABEL.WARNING	1